

Georgia Tech

FACT BOOK 2019

Admissions

Freshman Admissions by Year and College, Fall Terms	2
Freshman Admissions by Year and Demographic, Fall Terms.....	3
Average SAT Scores for Freshman Cohorts.....	4
Average ACT Scores for Freshman Cohorts	4
Transfer Admissions by Year and College, Fall Terms.....	5
Transfer Admissions by Year and Demographic, Fall Terms	6
Graduate Admissions by Year and College, Fall Terms.....	7
Graduate Admissions by Year and Demographic, Fall Terms.....	8

Enrollment

Fall Enrollment by Level, Class, and Gender, Three-Term History.....	10
Fall Enrollment by Class and Level.....	11
Fall Undergraduate Enrollment by College and Major.....	12
Fall Undergraduate Enrollment by College and Major, Ten-Term History.....	13
Fall Graduate Enrollment by College and Major	15
Fall Graduate Enrollment by College and Major, Ten-Term History	16
Graduate Enrollment by Degree Program, Fall Terms.....	18
Fall Enrollment by Country of Residence.....	19
Fall Enrollment by State of Residence	22
Fall Enrollment by Georgia County of Residence.....	24

Degrees Conferred

Summary of Degrees Conferred by College and Degree Level, Ten-Year History	28
Bachelor's Degrees Conferred by College, Ten-Year History	29
Master's Degrees Conferred by College, Ten-Year History.....	31
Ph.D. Degrees Conferred by College, Ten-Year History.....	33
Degrees Conferred by College, Ethnicity and Gender	35
Degrees Conferred by Country of Residence.....	36
Degrees Conferred by State of Residence	38
Degrees Conferred by Georgia County of Residence.....	40

Institute Information

Additional Student Information

Student Grades by College & Percent.....	43
Student Semester Credit Hours Earned by College & Division.....	44
Retention Rates for Entering Freshmen	45
Graduation Rates for Entering Freshmen.....	46

Additional Student Information (Continued)

Alumni	47
Career Discovery & Development.....	48
Experiential Learning	49
International Programs (Study Abroad).....	49
<i>Facilities</i>	
Housing.....	53
Library.....	53
Space.....	53
<i>Finance</i>	
Tuition and Fees.....	54
Financial Aid.....	54
Institute Finances	55
<i>Institute Research</i>	
Proposals, Awards and Sponsored Programs	56
Enterprise Innovation Institute	59
<i>Faculty</i>	
Faculty by Gender.....	60
Faculty by Race/Ethnicity.....	61
Faculty by Tenure/Tenure-Track	62
<i>Georgia Tech Organizational Charts</i>	
Chart A: Office of the President	63
Chart B: Provost and Executive Vice President for Academic Affairs.....	64
Chart C: Degree Granting Schools and Departments	65
Chart D: Executive Vice President for Administration and Finance	66
Chart E: Executive Vice President for Research.....	67
Chart F: Student Life.....	68
Chart G: Development	69
Chart H: Institute Communications	70
Chart I: Institute Diversity	71
Chart J: Georgia Tech Athletic Association.....	72



Georgia Institute of Technology

Vision and Mission Statements

Vision

Georgia Tech will define the technological research university of the twenty-first century. As a result, we will be leaders in influencing major technological, social, and policy decisions that address critical global challenges. “What does Georgia Tech think?” will be a common question in research, business, the media, and government.

Mission

Technological change is fundamental to the advancement of the human condition. The Georgia Tech community—students, staff, faculty, and alumni—will realize our motto of “Progress and Service” through effectiveness and innovation in teaching and learning, our research advances, and entrepreneurship in all sectors of society. We will be leaders in improving the human condition in Georgia, the United States, and around the globe.

Accreditation

The Georgia Institute of Technology is accredited by the Southern Association of Colleges and Schools Commission on Colleges to award baccalaureate, masters, and doctoral degrees. Contact the Southern Association of Colleges and Schools Commission on Colleges at:

Southern Association of Colleges and Schools
Commission on Colleges
1866 Southern Lane
Decatur, Georgia 30033-4097
Telephone number: 404-679-4500
Website: www.sacscoc.org

for questions about the accreditation of the Georgia Institute of Technology. In addition, many Institute programs are specifically accredited by professional certifying agencies.

Professional accreditations:

College of Design

American Council for Construction Education
National Architectural Accrediting Board
International Facility Management Association
(IFMA) Foundation
Planning Accreditation Board
National Association of Schools in Art and Design

College of Computing

Computing Accreditation Commission of
ABET

College of Engineering

Commission on Accreditation of Medical
Physics Educational Programs
Engineering Accreditation Commission of
ABET

College of Sciences

American Chemical Society
Human Factors and Ergonomics Society

Scheller College of Business

Association to Advance Collegiate Schools
of Business International

Georgia Tech Counseling Center

American Psychology Association (APA)
International Association of Counseling
Services (IACS)

Georgia Tech Language Institute

Commission on English Language Program
Accreditation (CEA)

Georgia Tech Police Department

Commission on Accreditation for Law
Enforcement Agencies (CALEA)



Admissions

2019 Fact Book

Freshman Admissions by Year and College, Fall Terms

Term	College	Number Applied	Number Accepted	%Applied Accepted	Number Enrolled	%Accepted Enrolled
Fall 2015	College of Computing	3,828	1,136	29.7%	371	32.7%
	College of Design	476	170	35.7%	67	39.4%
	College of Engineering	17,049	5,733	33.6%	2,004	35.0%
	College of Sciences	3,723	1,049	28.2%	303	28.9%
	Ivan Allen College	1,078	388	36.0%	182	46.9%
	Scheller College of Business	1,110	281	25.3%	164	58.4%
	Total	27,264	8,757	32.1%	3,091	35.3%
Fall 2016	College of Computing	5,003	953	19.0%	321	33.7%
	College of Design	592	181	30.6%	80	44.2%
	College of Engineering	18,543	4,894	26.4%	1,745	35.7%
	College of Sciences	3,821	1,115	29.2%	384	34.4%
	Ivan Allen College	1,348	401	29.7%	175	43.6%
	Scheller College of Business	1,224	315	25.7%	171	54.3%
	Total	30,531	7,859	25.7%	2,876	36.6%
Fall 2017	College of Computing	5,536	897	16.2%	279	31.1%
	College of Design	707	238	33.7%	111	46.6%
	College of Engineering	18,610	4,197	22.6%	1,622	38.6%
	College of Sciences	4,140	1,240	30.0%	479	38.6%
	Ivan Allen College	1,207	429	35.5%	188	43.8%
	Scheller College of Business	1,280	346	27.0%	183	52.9%
	Total	31,480	7,347	23.3%	2,862	39.0%
Fall 2018	College of Computing	6,845	1,135	16.6%	417	36.7%
	College of Design	892	248	27.8%	109	44.0%
	College of Engineering	19,878	4,430	22.3%	1,740	39.3%
	College of Sciences	5,024	1,394	27.7%	512	36.7%
	Ivan Allen College	1,431	456	31.9%	192	42.1%
	Scheller College of Business	1,541	374	24.3%	166	44.4%
	Total	35,611	8,037	22.6%	3,136	39.0%
Fall 2019	College of Computing	8,269	1,266	15.3%	557	44.0%
	College of Design	979	234	23.9%	113	48.3%
	College of Engineering	19,005	3,863	20.3%	1,617	41.9%
	College of Sciences	5,386	1,322	24.5%	438	33.1%
	Ivan Allen College	1,564	462	29.5%	166	35.9%
	Scheller College of Business	1,714	421	24.6%	190	45.1%
	Total	36,917	7,568	20.5%	3,081	40.7%

Freshman Admissions by Year and Demographic, Fall Terms

Term	Demographic	Number Applied		Number Accepted		%Applied Accepted		Number Enrolled		%Accepted Enrolled	
		Male	Female	Male	Female	Male	Female	Male	Female	Male	Female
Fall 2015	Asian	3,533	1,520	1,292	780	36.6%	51.3%	384	269	29.7%	34.5%
	Black or African American	1,337	853	301	206	22.5%	24.2%	115	84	38.2%	40.8%
	Hispanic or Latino	1,380	567	444	238	32.2%	42.0%	122	70	27.5%	29.4%
	American Indian or Alaska Native	18	9	1	2	5.6%	22.2%	1	1	100.0%	50.0%
	Native Hawaiian or Other Pacific Islander	11	3	2	1	18.2%	33.3%				
	Two or more	584	315	201	145	34.4%	46.0%	72	47	35.8%	32.4%
	White	6,386	2,786	2,141	1,521	33.5%	54.6%	874	649	40.8%	42.7%
	International	4,572	1,652	497	325	10.9%	19.7%	149	82	30.0%	25.2%
	Unknown	1,195	543	400	260	33.5%	47.9%	95	77	23.8%	29.6%
Total	19,016	8,248	5,279	3,478	27.8%	42.2%	1,812	1,279	34.3%	36.8%	
Fall 2016	Asian	4,020	1,854	1,066	733	26.5%	39.5%	355	240	33.3%	32.7%
	Black or African American	1,299	935	219	210	16.9%	22.5%	98	86	44.7%	41.0%
	Hispanic or Latino	1,545	716	359	242	23.2%	33.8%	107	78	29.8%	32.2%
	American Indian or Alaska Native	20	13	2	2	10.0%	15.4%		1		50.0%
	Native Hawaiian or Other Pacific Islander	11	5	3		27.3%					
	Two or more	641	344	173	117	27.0%	34.0%	57	46	32.9%	39.3%
	White	7,603	3,370	2,030	1,451	26.7%	43.1%	820	610	40.4%	42.0%
	International	4,751	1,713	429	264	9.0%	15.4%	157	80	36.6%	30.3%
	Unknown	1,148	543	341	218	29.7%	40.1%	93	48	27.3%	22.0%
Total	21,038	9,493	4,622	3,237	22.0%	34.1%	1,687	1,189	36.5%	36.7%	
Fall 2017	Asian	4,224	1,881	969	669	22.9%	35.6%	325	259	33.5%	38.7%
	Black or African American	1,383	945	242	254	17.5%	26.9%	100	101	41.3%	39.8%
	Hispanic or Latino	1,648	765	335	246	20.3%	32.2%	106	95	31.6%	38.6%
	American Indian or Alaska Native	15	11		1		9.1%				
	Native Hawaiian or Other Pacific Islander	17	5	2		11.8%		1			50.0%
	Two or more	729	372	160	128	21.9%	34.4%	65	49	40.6%	38.3%
	White	7,757	3,400	1,866	1,402	24.1%	41.2%	841	628	45.1%	44.8%
	International	4,998	1,769	397	208	7.9%	11.8%	98	57	24.7%	27.4%
	Unknown	1,090	471	289	179	26.5%	38.0%	83	54	28.7%	30.2%
Total	21,861	9,619	4,260	3,087	19.5%	32.1%	1,619	1,243	38.0%	40.3%	
Fall 2018	Asian	5,491	2,706	1,233	831	22.5%	30.7%	435	294	35.3%	35.4%
	Black or African American	1,539	1,067	261	250	17.0%	23.4%	123	92	47.1%	36.8%
	Hispanic or Latino	1,953	924	387	275	19.8%	29.8%	128	98	33.1%	35.6%
	American Indian or Alaska Native	20	6	4	1	20.0%	16.7%	1		25.0%	
	Native Hawaiian or Other Pacific Islander	7	9		1		11.1%				
	Two or more	930	495	194	165	20.9%	33.3%	62	69	32.0%	41.8%
	White	9,051	3,968	1,905	1,358	21.0%	34.2%	845	582	44.4%	42.9%
	International	5,005	1,771	697	348	13.9%	19.6%	253	122	36.3%	35.1%
	Unknown	462	207	75	52	16.2%	25.1%	17	15	22.7%	28.8%
Total	24,458	11,153	4,756	3,281	19.4%	29.4%	1,864	1,272	39.2%	38.8%	
Fall 2019	Asian	6,028	2,914	1,203	891	20.0%	30.6%	439	334	36.5%	37.5%
	Black or African American	1,652	1,097	242	251	14.6%	22.9%	104	99	43.0%	39.4%
	Hispanic or Latino	2,039	1,015	368	283	18.0%	27.9%	124	104	33.7%	36.7%
	American Indian or Alaska Native	25	7	5		20.0%		4		80.0%	
	Native Hawaiian or Other Pacific Islander	12	5	1	2	8.3%	40.0%		2		100.0%
	Two or more	950	523	161	158	16.9%	30.2%	69	67	42.9%	42.4%
	White	8,862	4,046	1,650	1,310	18.6%	32.4%	795	580	48.2%	44.3%
	International	5,003	1,836	568	312	11.4%	17.0%	213	118	37.5%	37.8%
	Unknown	654	248	101	61	15.4%	24.6%	20	9	19.8%	14.8%
Null	1		1		100.0%						
Total	25,226	11,691	4,300	3,268	17.0%	28.0%	1,768	1,313	41.1%	40.2%	

Average SAT Scores for Freshman Cohorts

Cohort	SAT Reading	SAT Math	SAT Composite
Fall 2010	630	682	1312
Fall 2011	636	687	1323
Fall 2012	638	697	1335
Fall 2013	652	705	1357
Fall 2014	664	706	1370
Fall 2015	667	709	1376
Fall 2016	670	709	1379
Fall 2017	693	720	1412
Fall 2018	700	739	1439
Fall 2019	699	740	1439

Note: Prior year Fact Books reported the average for re-centered SAT scores which included converted ACT scores for those students who opted to take the ACT instead of the SAT.

Average ACT Scores for Freshman Cohorts

Cohort	ACT Reading	ACT Math	ACT Composite
Fall 2010	28	30	29
Fall 2011	29	31	30
Fall 2012	29	31	30
Fall 2013	30	31	30
Fall 2014	31	31	31
Fall 2015	31	31	31
Fall 2016	32	31	32
Fall 2017	32	31	32
Fall 2018	32	32	32
Fall 2019	32	32	32

Transfer Admissions by Year and College, Fall Terms

Term	College	Number Applied	Number Accepted	%Applied Accepted	Number Enrolled	%Accepted Enrolled
Fall 2015	College of Computing	245	55	22.4%	44	80.0%
	College of Design	39	18	46.2%	17	94.4%
	College of Engineering	1,173	406	34.6%	332	81.8%
	College of Sciences	168	57	33.9%	35	61.4%
	Ivan Allen College	65	21	32.3%	18	85.7%
	Scheller College of Business	111	38	34.2%	36	94.7%
	Total	1,801	595	33.0%	482	81.0%
Fall 2016	College of Computing	292	60	20.5%	47	78.3%
	College of Design	35	22	62.9%	21	95.5%
	College of Engineering	1,215	474	39.0%	411	86.7%
	College of Sciences	174	76	43.7%	55	72.4%
	Ivan Allen College	59	23	39.0%	21	91.3%
	Scheller College of Business	102	33	32.4%	30	90.9%
	Total	1,877	688	36.7%	585	85.0%
Fall 2017	College of Computing	349	71	20.3%	66	93.0%
	College of Design	58	23	39.7%	22	95.7%
	College of Engineering	1,102	469	42.6%	409	87.2%
	College of Sciences	209	86	41.1%	72	83.7%
	Ivan Allen College	73	31	42.5%	26	83.9%
	Scheller College of Business	125	42	33.6%	40	95.2%
	Total	1,916	722	37.7%	635	88.0%
Fall 2018	College of Computing	419	73	17.4%	71	97.3%
	College of Design	59	35	59.3%	32	91.4%
	College of Engineering	1,051	319	30.4%	276	86.5%
	College of Sciences	269	73	27.1%	63	86.3%
	Ivan Allen College	151	74	49.0%	66	89.2%
	Scheller College of Business	119	32	26.9%	31	96.9%
	Total	2,068	606	29.3%	539	88.9%
Fall 2019	College of Computing	483	70	14.5%	66	94.3%
	College of Design	101	42	41.6%	39	92.9%
	College of Engineering	1,068	312	29.2%	262	84.0%
	College of Sciences	406	123	30.3%	97	78.9%
	Ivan Allen College	198	85	42.9%	72	84.7%
	Scheller College of Business	137	34	24.8%	30	88.2%
	Total	2,393	666	27.8%	566	85.0%

Transfer Admissions by Year and Demographic, Fall Terms

Term	Demographic	Number Applied		Number Accepted		%Applied Accepted		Number Enrolled		%Accepted Enrolled	
		Male	Female	Male	Female	Male	Female	Male	Female	Male	Female
Fall 2015	Asian	206	49	70	19	34.0%	38.8%	59	14	84.3%	73.7%
	Black or African American	109	46	38	25	34.9%	54.3%	31	18	81.6%	72.0%
	Hispanic or Latino	97	38	36	20	37.1%	52.6%	24	12	66.7%	60.0%
	American Indian or Alaska Native	1									
	Native Hawaiian or Other Pacific Islander	2									
	Two or more	42	14	12	4	28.6%	28.6%	11	3	91.7%	75.0%
	White	485	143	176	69	36.3%	48.3%	166	59	94.3%	85.5%
	International	379	186	80	46	21.1%	24.7%	53	32	66.3%	69.6%
	Unknown	3	1								
	Total	1,324	477	412	183	31.1%	38.4%	344	138	83.5%	75.4%
Fall 2016	Asian	214	73	78	38	36.4%	52.1%	69	34	88.5%	89.5%
	Black or African American	105	51	45	23	42.9%	45.1%	35	17	77.8%	73.9%
	Hispanic or Latino	109	35	46	13	42.2%	37.1%	36	13	78.3%	100.0%
	American Indian or Alaska Native	2		1		50.0%					
	Native Hawaiian or Other Pacific Islander	1									
	Two or more	48	11	16	5	33.3%	45.5%	15	5	93.8%	100.0%
	White	487	142	251	79	51.5%	55.6%	234	67	93.2%	84.8%
	International	418	176	55	38	13.2%	21.6%	38	22	69.1%	57.9%
	Unknown	3	2								
	Total	1,387	490	492	196	35.5%	40.0%	427	158	86.8%	80.6%
Fall 2017	Asian	257	97	98	57	38.1%	58.8%	82	50	83.7%	87.7%
	Black or African American	96	43	40	13	41.7%	30.2%	36	10	90.0%	76.9%
	Hispanic or Latino	110	40	44	16	40.0%	40.0%	36	14	81.8%	87.5%
	American Indian or Alaska Native	2		1		50.0%		1		100.0%	
	Native Hawaiian or Other Pacific Islander	2	1	1	1	50.0%	100.0%	1	1	100.0%	100.0%
	Two or more	45	18	18	13	40.0%	72.2%	18	12	100.0%	92.3%
	White	504	132	262	71	52.0%	53.8%	241	68	92.0%	95.8%
	International	426	135	53	33	12.4%	24.4%	39	25	73.6%	75.8%
	Unknown	6	2	1		16.7%		1		100.0%	
	Total	1,448	468	518	204	35.8%	43.6%	455	180	87.8%	88.2%
Fall 2018	Asian	283	104	114	45	40.3%	43.3%	112	40	98.2%	88.9%
	Black or African American	89	50	27	13	30.3%	26.0%	25	7	92.6%	53.8%
	Hispanic or Latino	122	43	39	18	32.0%	41.9%	33	17	84.6%	94.4%
	American Indian or Alaska Native	3									
	Native Hawaiian or Other Pacific Islander	3		1		33.3%		1		100.0%	
	Two or more	65	36	19	13	29.2%	36.1%	18	11	94.7%	84.6%
	White	478	178	209	79	43.7%	44.4%	188	65	90.0%	82.3%
	International	450	155	19	8	4.2%	5.2%	16	4	84.2%	50.0%
	Unknown	6	3	2		33.3%		2		100.0%	
	Total	1,499	569	430	176	28.7%	30.9%	395	144	91.9%	81.8%
Fall 2019	Asian	349	177	103	73	29.5%	41.2%	88	63	85.4%	86.3%
	Black or African American	99	67	29	24	29.3%	35.8%	23	20	79.3%	83.3%
	Hispanic or Latino	128	60	34	25	26.6%	41.7%	25	20	73.5%	80.0%
	Native Hawaiian or Other Pacific Islander	3									
	Two or more	70	27	24	6	34.3%	22.2%	20	5	83.3%	83.3%
	White	486	190	184	80	37.9%	42.1%	167	69	90.8%	86.3%
	International	499	221	44	35	8.8%	15.8%	36	26	81.8%	74.3%
	Unknown	12	5	3	2	25.0%	40.0%	2	2	66.7%	100.0%
	Total	1,646	747	421	245	25.6%	32.8%	361	205	85.7%	83.7%

Graduate Admissions by Year and College, Fall Terms

Term	College	Number Applied	Number Accepted	%Applied Accepted	Number Enrolled	%Accepted Enrolled
Fall 2015	College of Computing	4,908	1,564	31.9%	1,089	69.6%
	College of Design	721	464	64.4%	185	39.9%
	College of Engineering	8,235	2,327	28.3%	1,071	46.0%
	College of Sciences	1,645	443	26.9%	202	45.6%
	Ivan Allen College	361	187	51.8%	83	44.4%
	Scheller College of Business	1,586	531	33.5%	322	60.6%
	Total	17,456	5,516	31.6%	2,952	53.5%
Fall 2016	College of Computing	5,920	1,964	33.2%	1,478	75.3%
	College of Design	900	520	57.8%	191	36.7%
	College of Engineering	8,711	2,746	31.5%	1,308	47.6%
	College of Sciences	1,780	509	28.6%	233	45.8%
	Ivan Allen College	391	211	54.0%	84	39.8%
	Scheller College of Business	1,691	570	33.7%	332	58.2%
	Total	19,393	6,520	33.6%	3,626	55.6%
Fall 2017	College of Computing	7,711	3,078	39.9%	2,449	79.6%
	College of Design	892	523	58.6%	178	34.0%
	College of Engineering	10,272	3,132	30.5%	1,514	48.3%
	College of Sciences	1,804	492	27.3%	238	48.4%
	Ivan Allen College	401	205	51.1%	86	42.0%
	Scheller College of Business	1,817	544	29.9%	327	60.1%
	Total	22,897	7,974	34.8%	4,792	60.1%
Fall 2018	College of Computing	8,801	3,724	42.3%	2,993	80.4%
	College of Design	900	503	55.9%	186	37.0%
	College of Engineering	10,086	3,421	33.9%	1,926	56.3%
	College of Sciences	1,839	424	23.1%	207	48.8%
	Ivan Allen College	471	231	49.0%	102	44.2%
	Scheller College of Business	1,787	550	30.8%	352	64.0%
	Total	23,884	8,853	37.1%	5,766	65.1%
Fall 2019	College of Computing	9,348	3,916	41.9%	2,832	72.3%
	College of Design	972	557	57.3%	213	38.2%
	College of Engineering	10,988	4,623	42.1%	2,695	58.3%
	College of Sciences	1,740	430	24.7%	166	38.6%
	Ivan Allen College	695	399	57.4%	239	59.9%
	Scheller College of Business	1,655	528	31.9%	319	60.4%
	Total	25,398	10,453	41.2%	6,464	61.8%

Graduate Admissions by Year and Demographic, Fall Terms

Term	Demographic	Number Applied	Number Accepted	%Applied Accepted	Number Enrolled	%Accepted Enrolled
Fall 2015	Asian	989	527	53.3%	316	60.0%
	Black or African American	470	190	40.4%	124	65.3%
	Hispanic or Latino	407	204	50.1%	109	53.4%
	American Indian or Alaska Native	9	6	66.7%	2	33.3%
	Native Hawaiian or Other Pacific Islander	2	1	50.0%	1	100.0%
	Two or more	210	116	55.2%	57	49.1%
	White	3,205	1,936	60.4%	1,105	57.1%
	International	12,160	2,535	20.8%	1,237	48.8%
	Unknown	4	1	25.0%	1	100.0%
	Total	17,456	5,516	31.6%	2,952	53.5%
Fall 2016	Asian	1,296	727	56.1%	440	60.5%
	Black or African American	510	222	43.5%	155	69.8%
	Hispanic or Latino	490	265	54.1%	144	54.3%
	American Indian or Alaska Native	5	3	60.0%	2	66.7%
	Native Hawaiian or Other Pacific Islander	3	2	66.7%	1	50.0%
	Two or more	238	138	58.0%	84	60.9%
	White	3,478	2,161	62.1%	1,304	60.3%
	International	13,371	3,002	22.5%	1,496	49.8%
	Unknown	2				
	Total	19,393	6,520	33.6%	3,626	55.6%
Fall 2017	Asian	1,878	1,022	54.4%	662	64.8%
	Black or African American	645	271	42.0%	187	69.0%
	Hispanic or Latino	679	364	53.6%	238	65.4%
	American Indian or Alaska Native	11	6	54.5%	4	66.7%
	Native Hawaiian or Other Pacific Islander	3	2	66.7%	1	50.0%
	Two or more	325	182	56.0%	98	53.8%
	White	4,536	2,754	60.7%	1,803	65.5%
	International	14,818	3,372	22.8%	1,798	53.3%
	Unknown	2	1	50.0%	1	100.0%
	Total	22,897	7,974	34.8%	4,792	60.1%
Fall 2018	Asian	2,087	1,244	59.6%	882	70.9%
	Black or African American	656	305	46.5%	202	66.2%
	Hispanic or Latino	759	438	57.7%	306	69.9%
	American Indian or Alaska Native	2				
	Native Hawaiian or Other Pacific Islander	6	3	50.0%	3	100.0%
	Two or more	354	207	58.5%	136	65.7%
	White	4,815	3,010	62.5%	1,978	65.7%
	International	15,069	3,569	23.7%	2,219	62.2%
	Unknown	136	77	56.6%	40	51.9%
	Total	23,884	8,853	37.1%	5,766	65.1%
Fall 2019	Asian	2,472	1,626	65.8%	1,042	64.1%
	Black or African American	779	377	48.4%	254	67.4%
	Hispanic or Latino	841	534	63.5%	351	65.7%
	American Indian or Alaska Native	13	8	61.5%	6	75.0%
	Native Hawaiian or Other Pacific Islander	6	5	83.3%	5	100.0%
	Two or more	373	256	68.6%	150	58.6%
	White	4,995	3,328	66.6%	2,174	65.3%
	International	15,757	4,216	26.8%	2,433	57.7%
	Unknown	162	103	63.6%	49	47.6%
	Total	25,398	10,453	41.2%	6,464	61.8%



Enrollment

2019 Fact Book

Fall Enrollment by Level, Class, and Gender, Three-Term History

Level	Class	Fall 2017			Fall 2018			Fall 2019		
		Male	Female	Total	Male	Female	Total	Male	Female	Total
Undergraduate	Freshman	1,244	1,029	2,273	1,258	1,008	2,266	1,153	1,005	2,158
	Sophomore	1,800	1,287	3,087	1,961	1,296	3,257	1,937	1,345	3,282
	Junior	2,327	1,372	3,699	2,268	1,389	3,657	2,328	1,459	3,787
	Senior	3,788	1,964	5,752	3,869	2,161	6,030	3,857	2,281	6,138
	JEPHS*	345	182	527	374	176	550	356	139	495
	Special Undergraduate	156	79	235	202	85	287	202	97	299
	Total	9,660	5,913	15,573	9,932	6,115	16,047	9,833	6,326	16,159
Graduate	Masters	8,120	2,168	10,288	10,257	2,845	13,102	12,948	3,755	16,703
	Ph.D.	2,478	969	3,447	2,495	1,005	3,500	2,494	1,074	3,568
	Special Graduate	41	27	68	52	21	73	46	14	60
	Total	10,639	3,164	13,803	12,804	3,871	16,675	15,488	4,843	20,331
Institute Total		20,299	9,077	29,376	22,736	9,986	32,722	25,321	11,169	36,490

*JEPHS: Joint Enrollment Program for High School Students

Fall Enrollment by Class and Level, Fall 2019

Race-Ethnicity	Gender	Undergraduate								Total	Graduate			Total	Institute Total
		Freshman	Sophomore	Junior	Senior	JEPHS*	Special Underg..	Masters	Ph.D.		Special Gradua..				
Asian	Female	211	325	340	527	82	3	1,488	716	92	3	811	2,299		
	Male	163	457	554	886	190	7	2,257	2,117	200	4	2,321	4,578		
	Total	374	782	894	1,413	272	10	3,745	2,833	292	7	3,132	6,877		
Black or African American	Female	93	98	120	165	4	9	489	181	54	2	237	726		
	Male	107	146	137	217	11	13	631	422	53	2	477	1,108		
	Total	200	244	257	382	15	22	1,120	603	107	4	714	1,834		
Hispanic or Latino	Female	91	99	130	140	1	6	467	155	62		217	684		
	Male	93	137	156	283	9	4	682	743	99	4	846	1,528		
	Total	184	236	286	423	10	10	1,149	898	161	4	1,063	2,212		
International	Female	119	126	85	164	5	45	544	1,497	532	3	2,032	2,576		
	Male	198	224	186	363	19	118	1,108	4,142	1,321	16	5,479	6,587		
	Total	317	350	271	527	24	163	1,652	5,639	1,853	19	7,511	9,163		
Two or more	Female	50	68	62	109	6	3	298	96	24		120	418		
	Male	45	74	90	137	20	3	369	294	45		339	708		
	Total	95	142	152	246	26	6	667	390	69		459	1,126		
White	Female	434	614	677	1,080	41	14	2,860	1,088	305	5	1,398	4,258		
	Male	534	877	1,140	1,825	103	45	4,524	5,127	768	18	5,913	10,437		
	Total	968	1,491	1,817	2,905	144	59	7,384	6,215	1,073	23	7,311	14,695		
Other	Female	7	15	45	96		17	180	22	5	1	28	208		
	Male	13	22	65	146	4	12	262	103	8	2	113	375		
	Total	20	37	110	242	4	29	442	125	13	3	141	583		
Institute Total		2,158	3,282	3,787	6,138	495	299	16,159	16,703	3,568	60	20,331	36,490		

*JEPHS: Joint Enrollment Program for High School Students



Undergraduate Enrollment by College and Major, Fall 2019

College	Major	Asian			Black or African American			Hispanic or Latino			Two or more			White			Other			International			Institute			
		Male	Female	Total	Male	Female	Total	Male	Female	Total	Male	Female	Total	Male	Female	Total	Male	Female	Total	Male	Female	Total	Male	Female	Total	
College of Computing	Computational Media	6	14	20	14	4	18	4	7	11	2	1	3	15	15	30	2		2	3	5	8	46	46	92	
	Computer Science	729	281	1,010	95	51	146	105	40	145	55	36	91	703	156	859	57	14	71	283	91	374	2,027	669	2,696	
	Total	735	295	1,030	109	55	164	109	47	156	57	37	94	718	171	889	59	14	73	286	96	382	2,073	715	2,788	
College of Design	Architecture	9	25	34	5	11	16	13	13	26	2	8	10	33	50	83		2	2	3	14	17	65	123	188	
	Industrial Design	12	47	59	9	5	14	7	5	12	2	9	11	44	83	127	3	3	6	13	10	23	90	162	252	
	Music Technology	2	1	3	3		3	2		2	4	1	5	31	7	38	1		1	4	3	7	47	12	59	
	Pre-Industrial Design													1	1	2								1	1	2
	Total	23	73	96	17	16	33	22	18	40	8	18	26	108	141	249	4	5	9	20	27	47	202	298	500	
College of Engineering	Aerospace Engineering	135	30	165	40	10	50	69	18	87	32	12	44	402	99	501	18	2	20	57	15	72	753	186	939	
	Biomedical Engineering	130	146	276	27	62	89	42	60	102	26	31	57	220	300	520	13	26	39	34	57	91	492	682	1,174	
	Chemical and Biomolecular Eng	50	79	129	29	44	73	33	26	59	17	15	32	220	172	392	5	9	14	44	45	89	398	390	788	
	Civil Engineering	27	27	54	24	17	41	27	14	41	8	9	17	131	86	217	4	6	10	16	23	39	237	182	419	
	Computer Engineering	137	35	172	41	18	59	35	7	42	13	7	20	196	39	235	13	4	17	59	22	81	494	132	626	
	Electrical Engineering	133	31	164	44	16	60	35	7	42	17	7	24	228	65	293	13	4	17	77	23	100	547	153	700	
	Environmental Engineering	5	18	23	2	7	9	7	15	22	4	5	9	43	92	135	2	5	7	4	10	14	67	152	219	
	Industrial Engineering	184	148	332	24	30	54	51	44	95	20	18	38	335	255	590	18	21	39	94	77	171	726	593	1,319	
	Materials Science & Engr	24	13	37	6	10	16	12	5	17	9	8	17	110	65	175	11	1	12	21	12	33	193	114	307	
	Mechanical Engineering	205	72	277	88	32	120	131	46	177	52	25	77	752	218	970	38	11	49	173	35	208	1,439	439	1,878	
	Nuclear & Radiological Engr	6	1	7	6	2	8	5		5	2	3	5	43	11	54				1		1	63	17	80	
	Undeclared Coll of Engr	1		1	1		1							5		5							7		7	
Total	1,037	600	1,637	332	248	580	447	242	689	200	140	340	2,685	1,402	4,087	135	89	224	580	319	899	5,416	3,040	8,456		
College of Sciences	Applied Physics	2	1	3	2		2	1	1	2	1	1	2	6	2	8		1	1	1	1	2	13	7	20	
	Biochemistry	27	45	72	5	16	21	7	10	17	2	3	5	32	72	104	2	3	5	3	4	7	78	153	231	
	Biology	33	73	106	10	26	36	3	23	26	6	18	24	45	139	184	2	6	8	5	2	7	104	287	391	
	Chemistry	8	11	19	4	6	10	4	5	9	3	6	9	30	48	78		1	1	3	3	6	52	80	132	
	Discrete Mathematics													1	1	2							1	1	2	
	Earth & Atmospheric Sciences	1	3	4	2	1	3	1	1	2		1	1	13	27	40					1	1	17	34	51	
	Mathematics	28	16	44	4	6	10	4	3	7	9	4	13	61	30	91	6		6	26	9	35	138	68	206	
	Neuroscience	25	67	92	3	15	18	5	18	23	6	10	16	22	116	138	2	2	4	2	4	6	65	232	297	
	Physics	17	4	21	4	2	6	10	3	13	8	4	12	90	23	113	5		5	19	5	24	153	41	194	
	Psychology	4	18	22	5	5	10	3	9	12	2	3	5	10	54	64		2	2		3	3	24	94	118	
Total	145	238	383	39	77	116	38	73	111	37	50	87	309	512	821	17	15	32	59	32	91	644	997	1,641		
Ivan Allen College	Applied Lang/Intercultural St	1	3	4	1	1	2		1	1	1	1	3	13	16							6	18	24		
	Computational Media	15	12	27	6	8	14	3	2	5	1	2	3	18	21	39		2	2		5	5	43	52	95	
	Econ & Int'l Affairs		8	8	1	4	5		2	2		1	1	10	28	38	1	1	2	1		1	13	44	57	
	Economics	11	7	18	4	3	7	5	2	7	6	1	7	42	13	55	2	1	3	4	2	6	74	29	103	
	Global Econ/Mod Lang	2	2	4										3	4	7						1	6	6	12	
	History, Technology, & Society	2	1	3	7	6	13		4	4		2	2	9	21	30	1	1	2	1		1	20	35	55	
	Int'l Affairs & Mod Lang	1	4	5		3	3		6	6	1	5	6	14	30	44		1	1				16	49	65	
	International Affairs	1	9	10	1	6	7	3	6	9	2	3	5	17	28	45	1	2	3				25	54	79	
	Lit., Media, & Communication	2	19	21	11	10	21	3	13	16	4	3	7	18	86	104	1	6	7		3	3	39	140	179	
	Public Policy	2	12	14	3	7	10	1	3	4		2	2	25	46	71		1	1				31	71	102	
	Total	37	77	114	34	48	82	15	39	54	15	19	34	159	290	449	6	15	21	7	10	17	273	498	771	
Scheller College of Business	Business Administration	83	119	202	77	33	110	37	40	77	29	25	54	397	289	686	24	25	49	19	10	29	666	541	1,207	
	Total	83	119	202	77	33	110	37	40	77	29	25	54	397	289	686	24	25	49	19	10	29	666	541	1,207	
College of Registrar	Special/Non-Degree	197	86	283	23	12	35	14	8	22	23	9	32	148	55	203	17	17	34	137	50	187	559	237	796	
	Total	197	86	283	23	12	35	14	8	22	23	9	32	148	55	203	17	17	34	137	50	187	559	237	796	
Institute Total		2,257	1,488	3,745	631	489	1,120	682	467	1,149	369	298	667	4,524	2,860	7,384	262	180	442	1,108	544	1,652	9,833	6,326	16,159	

Undergraduate Enrollment by College and Major, Fall Term History

College	Major	2010	2011	2012	2013	2014	2015	2016	2017	2018	2019
College of Computing	Computational Media	150	134	82	111	108	109	101	89	66	92
	Computer Science	840	838	1,037	1,192	1,441	1,768	2,045	2,110	2,329	2,696
	Total	990	972	1,119	1,303	1,549	1,877	2,146	2,199	2,395	2,788
College of Design	Architecture	210	170	160	133	125	102	99	154	179	188
	Building Construction	116	86	50	45	24	6				
	Industrial Design	138	126	111	110	114	127	142	208	217	252
	Music Technology							7	32	52	59
	Pre-Architecture	83	95	46	33	26	43	48	3	1	
	Pre-Building Construction	5	4	6							
	Pre-Industrial Design	22	27	39	30	43	38	53	10	2	1
	Total	574	508	412	351	332	316	349	407	451	500
College of Engineering	Aerospace Engineering	763	751	869	875	867	892	947	902	971	939
	Biomedical Engineering	1,041	1,155	1,291	1,369	1,276	1,261	1,177	1,152	1,147	1,174
	Chemical and Biomolecular Eng	717	789	863	864	943	991	984	896	811	788
	Civil Engineering	648	597	579	527	488	473	473	441	443	419
	Civil Engineering - REP	49	50	15							
	Computer Engineering	387	424	455	521	545	589	598	626	648	626
	Computer Engineering - REP	9	5	1							
	Electrical Engineering	777	848	925	925	928	903	868	792	746	700
	Electrical Engineering - REP	34	33	15							
	Environmental Engineering	141	178	188	189	183	191	193	212	204	219
	Industrial Engineering	1,184	1,263	1,391	1,450	1,430	1,431	1,399	1,212	1,234	1,319
	Materials Science & Engr	131	159	216	266	315	343	345	341	359	307
	Mechanical Engineering	1,597	1,662	1,884	2,014	2,052	2,123	2,157	2,009	1,948	1,878
	Mechanical Engineering - REP	62	73	43							
	Nuclear & Radiological Engr	197	178	171	141	119	119	108	111	99	80
	Polymer & Fiber Engr	165	106	55	33	15					
Undeclared Coll of Engr	174	132	108	104	92	102	57	202	171	7	
Total	8,076	8,403	9,069	9,278	9,253	9,418	9,306	8,896	8,781	8,456	
College of Sciences	Applied Mathematics	151	153	144	111	101	118	133	5		
	Applied Physics	9	9	8	12	13	14	13	18	37	20

Undergraduate Enrollment by College and Major, Fall Term History

College	Major	2010	2011	2012	2013	2014	2015	2016	2017	2018	2019
College of Sciences	Biochemistry	204	235	226	191	193	200	214	242	248	231
	Biology	470	460	453	395	343	309	358	376	388	391
	Chemistry	116	110	98	85	78	80	94	127	138	132
	Discrete Mathematics	27	20	11	14	15	22	35	23	10	1
	Earth & Atmospheric Sciences	55	44	39	45	30	41	46	41	51	51
	Mathematics								164	215	206
	Neuroscience								138	205	297
	Physics	131	145	136	139	126	131	154	185	204	194
	Psychology	122	135	144	118	105	98	104	93	91	118
	Undeclared Coll of Sciences	38	32	12	10	16	22	8	1		
	Total	1,323	1,343	1,271	1,120	1,020	1,035	1,159	1,413	1,587	1,641
Ivan Allen College	Applied Lang/Intercultural St		11	19	23	26	19	22	28	23	24
	Computational Media	150	133	159	114	106	111	100	111	123	95
	Econ & Int'l Affairs	64	65	64	54	55	52	52	49	62	57
	Economics	55	47	49	50	51	57	61	79	98	103
	Global Econ/Mod Lang	21	18	17	9	7	5	7	12	17	12
	History, Technology, & Society	81	66	69	64	45	45	28	42	57	55
	Int'l Affairs & Mod Lang	134	117	112	86	77	70	82	72	67	65
	International Affairs	135	113	93	70	58	64	64	74	97	79
	Lit., Media, & Communication					25	89	92	136	164	179
	Public Policy	68	64	63	48	46	49	64	75	79	102
	Science, Technology, & Culture	147	132	103	92	46					
	Undeclared Ivan Allen College	17	13	9	12	20	22	11	1		
	Total	872	779	757	622	562	583	583	679	787	771
Scheller College of Business	Business Administration			418	762	1,022	1,172	1,220	1,215	1,205	1,207
	Management	1,325	1,295	908	539	258	59	2	1		
	Total	1,325	1,295	1,326	1,301	1,280	1,231	1,222	1,216	1,205	1,207
College of Registrar	Special/Non-Degree	590	648	573	583	686	682	724	763	841	796
	Total	590	648	573	583	686	682	724	763	841	796
Institute Total		13,750	13,948	14,527	14,558	14,682	15,142	15,489	15,573	16,047	16,159

Graduate Enrollment by College and Major, Fall 2019

College	Major	Asian			Black or African American			Hispanic or Latino			Two or more			White			Other			International			1		Institute Total	
		Male	Female	Total	Male	Female	Total	Male	Female	Total	Male	Female	Total	Male	Female	Total	Male	Female	Total	Male	Female	Total	Male	Female		
College of Computing	Algor. Combntrcs & Optimization	1		1			1								1					5	2	7	7	2	9	
	Analytics	2	3	5		1	1					2	2	6	2	8		1	1	11	7	18	22	13	35	
	Bioengineering		1	1																	1	1			2	1
	Bioinformatics																									
	Computational Sci & Engr	2	2	4								1	1	14	4	18				43	20	63	61	26	87	
	Computer Science	1,404	371	1,775	212	53	265	484	55	539	159	40	199	3,043	346	3,389	69	8	77	2,764	831	3,595	8,135	1,704	9,839	
	Cybersecurity	45	16	61	25	11	36	22	8	30	18		18	172	22	194				73	12	85	35	70	425	
	Human-Centered Computing	3	4	7		3	4	1	1	2				4	8	12				6	9	15	15	22	37	
	Human-Computer Interaction	4	7	11	1	4	5	1	1	2		2	2	10	7	17				19	14	33	35	34	69	
	Information Security													1	1	2							1	1	2	1
	Machine Learning	2	1	3										9	9	18				6	1	7	17	2	19	
	Robotics	1	1	2	1		1				1	1	1	7	2	9				5	5	10	14	4	18	
	Total	1,464	403	1,867	240	72	312	509	64	573	181	43	224	3,267	391	3,658	70	9	79	2,932	897	3,829	8,663	1,879	10,542	
	College of Design	Architectural Technology	2	4	6	4		4	3	6	9		3	23	31	54				16	34	50	48	78	126	
		Architecture	1	1	2									3	6	9			1	14	11	25	19	19	38	
Building Construction					3	3	6	2	1	3	1		1	11	2	13				20	11	31	37	17	54	
City & Regional Planning		1		1	1	1	2						4	3	7				4	3	7	9	7	16		
City Planning			5	5	3	7	10	1		1	1	2	3	24	26	50				2	8	10	31	48	79	
Geograhic Info Science & Tech													1	1	2					1	3	4	2	5	7	
Human-Computer Interaction			1	1									1	1	2	1	3			6	11	17	8	14	22	
Industrial Design		1	1	2	1		1	2		2	1	2	3	2	6	8				10	11	21	17	20	37	
Music Technology		1	1	2		2	2							5	4	9				18	5	23	24	12	36	
Occupational Safety and Health		1		1	4	3	7		3	3	2		2	17	10	27							24	16	40	
Real Estate Development		3		3	3	7	10							19	3	22						1	29	10	39	
Urban Design			1	1																1	2	3	2	5	7	
Total		10	14	24	18	23	41	11	11	22	6	9	15	111	92	206	1	1	2	93	99	192	250	51	501	
College of Engineering		Algor. Combntrcs & Optimization	39	8	47	9	2	11	19	3	22	11	2	13	172	32	204	2	2	138	27	165	390	74	464	
		Analytics	415	192	607	75	27	102	111	29	140	58	27	85	932	274	1,206	19	7	26	524	210	734	2,134	766	2,900
	Applied Systems Engineering	2		2	3		3	4	4	8	2		2	38	7	45				3	3	6	52	14	66	
	Bioengineering	9	10	19	2	2	4	3	5	8	2	2	4	23	13	36			1	16	11	27	55	44	99	
	Bioinformatics													1	1	2				1	2	3	2	2	4	
	Biomedical Engineering	15	15	30	8	12	20	12	17	29	3	1	4	44	29	73	2	2	21	13	34	105	87	192		
	Biomedical Innovation/Develop	3	2	5	1	1	2							2	5	7				2	3	5	8	11	19	
	BMED Joint Emory/PKU	1	1	2				2	3	5	1		1	5	2	7				5	8	13	14	11	25	
	Chemical Engineering	13	6	19	3	3	6	2	3	5	7	5	3	8	14	22				57	44	101	124	73	197	
	Civil Engineering	9	4	13	5	5	10	8	4	12	6	1	7	40	27	67				119	39	158	181	75	256	
	Computational Sci & Engr	1		1	1		1			1				8	2	10				44	20	64	55	22	77	
	Cybersecurity	4	1	5	3	1	4	5	1	6				21	5	26				8	1	9	41	9	50	
	Electrical & Computer Engr	91	24	115	15	6	21	35	4	39	12	2	14	208	21	229	2	1	3	596	162	758	959	220	1,179	
	Engineering Sci & Mechanics										1		1							2	1	3	3	1	4	
	Environmental Engineering	5	4	9		3	3	3		3				12	7	19			1	25	29	54	45	44	89	
	Health Systems		5	5				2		2				2	1	3				1		1	5	6	11	
	Industrial Engineering	5	2	7	2		2	4	3	7	1	1	2	10	4	14				55	36	91	77	46	123	
	Machine Learning	5		5				1		1				6		6	1		1	22	5	27	36	5	41	
	Manufacturing Leadership			1	2		2	4	3	7						16							17	10	27	
	Materials Science & Engr	14	5	19		1	3	3	4	7	4	1	5	45	32	77				47	22	69	115	66	181	
	Mechanical Engineering	72	13	85	12	4	16	21	9	30	19	4	23	250	51	301	1	3	4	209	44	253	384	128	712	
	Medical Physics	1		1		1	1			1				13	5	18				2	1	3	18	8	26	
	Nuclear & Radiological Engr							1		1				1		1							2		2	
	Nuclear Engineering	5		5			5	5		5	3	3	3	23	1	24				2		2	38	1	39	
	Ocean Science and Engineering													1	1	2				2		2	3	1	4	
	Operations Research	4	2	6	1	1	2	1	2	3		3	3	19	9	28				74	31	105	99	48	147	
	Quanta/Computation Fin	2		2										3	1	4				18	15	33	23	16	39	
	Robotics	14	2	16	1		1	8		8	5	5	5	21	7	28	1		1	27	3	30	77	12	89	
	Statistics	1		1				3		3				1	1	2				13	6	19	16	7	23	
	Supply Chain Engineering	2	2	4		1	1	3		3				1	1	2				4	21	62	47	25	72	
	Total	733	299	1,032	145	65	210	263	91	354	129	47	176	1,954	558	2,513	28	14	42	2,078	758	2,836	5,330	1,833	7,163	
	College of Sciences	Special/Non-Degree	3	3	6	2	2	4	1	1	1				5	3	8	2	1	3	5	1	6	15	10	25
		Total	3	3	6	2	2	4	1	1	1				5	3	8	2	1	3	5	1	6	15	10	25
		Algor. Combntrcs & Optimization	1		1							1	1	1	6	3	9				4	3	7	12	6	18
		Applied Physiology	1	1	2										9	3	12							10	4	14
Bioinformatics		5	7	12		2	2	1	2	3	2	2	8	9	17			1	35	40	75	52	60	112		
Biology		1	4	5	2	2	4	4	3	7	1	1	2	11	19	30	1	1	2	9	16	25	24	46	70	
Chemistry		2	5	7	2	4	6	4	4	8	2	2	4	39	33	72				39	32	71	86	80	166	
Computational Sci & Engr		1	1	2										1	1	2				8	1	9	10	3	13	
Earth & Atmospheric Sciences		3	1	4		2	2	2	1	3				7	8	15				21	13	34	33	25	58	
Human-Computer Interaction			3	3										1	4	5					6	6	1	14	15	
Machine Learning																										

Graduate Enrollment by College and Major, Fall Term History

College	Major	2010	2011	2012	2013	2014	2015	2016	2017	2018	2019	
College of Computing	Algor, Combntrcs & Optimiztion	17	16	13	16	15	13	10	9	9	9	
	Analytics					9	14	22	20	30	35	
	Bioengineering	1	1			1			4	3	2	
	Bioinformatics	3	2	2	2	2	2	1	1	1	1	
	Computational Sci & Engr	41	51	59	55	75	89	94	122	98	87	
	Computer Science	520	453	472	447	1,734	3,310	4,474	6,448	8,372	9,839	
	Cybersecurity								68	78	425	
	Human-Centered Computing	46	39	37	35	40	37	44	36	33	37	
	Human-Computer Interaction	54	45	46	47	55	54	58	49	57	69	
	Information Security	69	59	60	49	80	70	74	5	4	1	
	Machine Learning									10	19	
	Robotics	21	26	22	20	23	20	14	17	15	18	
Total		772	692	711	671	2,034	3,609	4,791	6,779	8,710	10,542	
College of Design	Architectural Technology							15	90	105	126	
	Architecture	233	223	179	165	175	164	145	74	38	38	
	Building Construction	118	110	105	99	94	109	92	102	79	54	
	City & Regional Planning	20	22	24	21	19	23	22	18	18	16	
	City Planning	96	83	80	75	66	82	85	84	83	79	
	Geograhic Info Science & Tech				5	9	11	13	9	11	7	
	Human-Computer Interaction					13	21	22	27	26	22	
	Industrial Design	39	39	44	51	44	45	45	54	49	37	
	Music Technology	17	22	24	29	28	31	37	35	34	36	
	Occupational Safety and Health								23	40	40	
	Real Estate Development								14	34	39	
	Urban Design		4	7	5	3	3	11	16	15	7	
Total		523	503	463	450	451	489	487	546	532	501	
College of Engineering	Aerospace Engineering	535	571	532	500	503	477	481	491	468	464	
	Algor, Combntrcs & Optimiztion	7	6	6	4	5	5	7	5	8	6	
	Analytics					13	19	32	301	1,256	2,900	
	Applied Systems Engineering	23	47	61	64	53	50	50	58	61	66	
	Bioengineering	137	115	105	100	94	87	97	104	106	99	
	Bioinformatics	1	2	2	1		1	2	3	4	4	
	Biomedical Engineering	83	85	115	124	127	129	145	156	169	192	
	Biomedical Innovation/Develop				10	21	31	28	35	35	19	
	BMED Joint Emory/PKU	12	17	26	29	30	32	34	28	27	25	
	Chemical Engineering	201	209	217	210	189	213	201	184	179	197	
	Civil Engineering	246	264	272	276	263	261	296	300	273	256	
	Computational Sci & Engr	9	7	5	10	28	34	88	71	79	77	
	Cybersecurity										3	50
	Electrical & Computer Engr	1,140	1,133	1,104	1,156	1,326	1,136	1,118	1,096	1,114	1,179	
	Engineering Sci & Mechanics	5	1	1	3	3	4	3	3	5	4	
	Environmental Engineering	80	92	99	95	126	108	100	117	91	89	
	Health Systems	12	8	6	9	12	11	11	7	12	11	
	Industrial Engineering	274	268	242	163	127	130	142	134	129	123	
	International Logistics	16	18	16	10	11	2	2				
	Machine Learning										31	41
	Manufacturing Leadership								18	29	31	27
	Materials Science & Engr	109	118	134	153	160	165	176	191	186	181	
	Mechanical Engineering	700	697	670	663	681	671	694	711	699	712	
	Medical Physics	24	24	25	26	30	19	19	32	25	26	
	Nuclear & Radiological Engr	43	52	56	60	53	31	16	7	4	2	
	Nuclear Engineering	3	2	1		15	32	32	37	38	39	

Graduate Enrollment by College and Major, Fall Term History

College	Major	2010	2011	2012	2013	2014	2015	2016	2017	2018	2019
College of Engineering	Ocean Science and Engineering								3	4	4
	Operations Research	54	58	69	87	86	98	116	111	134	147
	Paper Science Engineering	5	5	6	2						
	Polymer, Textile & Fiber Engr	61	42	28	19	12	3	1			
	Quanta/Computation Fin	35	40	52	48	30	27	23	24	29	39
	Robotics	15	24	25	25	33	43	51	60	75	89
	Statistics	5	13	13	8	12	15	21	24	21	23
	Supply Chain Engineering		14	52	49	59	61	55	89	69	72
	Total	3,835	3,932	3,940	3,904	4,102	3,895	4,059	4,411	5,365	7,163
College of Sciences	Algor, Combntrcs & Optimizion	13	14	10	10	6	11	14	15	15	18
	Applied Physiology	23	21	22	21	19	19	14	18	16	14
	Bioinformatics	39	45	49	50	55	73	101	116	124	112
	Biology	98	82	84	71	71	65	70	71	70	70
	Chemistry	204	199	235	228	223	199	208	196	177	166
	Computational Sci & Engr	8	9	10	13	13	8	13	17	16	13
	Earth & Atmospheric Sciences	92	83	83	88	78	84	90	81	66	58
	Human-Computer Interaction	4	6	6	12	11	11	12	15	19	15
	Machine Learning									2	5
	Mathematics	58	59	55	65	70	69	70	83	86	83
	Ocean Science and Engineering								6	12	16
	Paper Science Engineering	7	7	6	2	1					
	Physics	116	112	133	138	125	138	131	138	133	116
	Prosthetics & Orthotics	19	19	22	25	28	28	26	28	14	
	Psychology	86	88	80	85	89	90	82	75	73	72
	Quanta/Computation Fin	25	28	25	29	36	39	37	34	43	40
	Quantitative Biosciences							9	16	24	31
Statistics	2	6	8	8	11	13	8	13	12	12	
Total	794	778	828	845	836	847	885	922	902	841	
Ivan Allen College	Applied Lang/Intercultural St										6
	Cybersecurity								6	14	123
	Digital Media	55	49	42	44	36	45	45	39	42	47
	Economics	56	52	42	29	34	43	42	50	59	71
	Global Media and Cultures										16
	Hist & Soc of Tech & Science	24	32	25	25	25	26	25	25	24	21
	Human-Computer Interaction	8	8	8	14	12	14	17	16	19	24
	Int'l Affairs, Sci, & Techny	9	8	11	11	11	12	14	14	12	12
	International Affairs	58	50	49	48	35	28	36	26	24	29
	Public Policy	68	82	86	66	51	46	53	47	51	47
	Public Policy/Joint Progm	33	25	23	18	15	12	11	11	8	11
	Sus Enrgy & Envr Mgt										15
Total	311	306	286	255	219	226	243	234	253	422	
Scheller College of Business	Analytics					14	28	24	28	33	30
	Business Administration			164	330	422	451	496	510	503	496
	Management	540	596	428	218	96	56	51	53	52	53
	Management of Technology	87	87	92	98	110	126	127	129	127	117
	MBA-Global Business	76	61	84	93	99	113	129	131	120	109
	Quanta/Computation Fin	32	38	34	32	28	31	30	40	47	32
	Total	735	782	802	771	769	805	857	891	882	837
College of Registrar	Special/Non-Degree				17	16	21	28	20	31	25
	Total				17	16	21	28	20	31	25
Institute Total		6,970	6,993	7,030	6,913	8,427	9,892	11,350	13,803	16,675	20,331

Graduate Enrollment by Degree Program*, Fall Terms

Term	College of Computing		College of Design		College of Engineering		College of Sciences		Ivan Allen College		Scheller College of Business		College of Registrar	Institute Total
	M.S.	Ph.D.	M.S.	Ph.D.	M.S.	Ph.D.	M.S.	Ph.D.	M.S.	Ph.D.	M.S.	Ph.D.	M.S.	
2010	449	323	428	95	1,766	2,069	152	642	200	111	683	52		6,970
2011	380	312	409	94	1,875	2,057	144	634	188	118	725	57		6,993
2012	413	298	374	89	1,792	2,148	152	676	165	121	753	49		7,030
2013	373	298	356	94	1,766	2,138	164	681	143	112	716	55	17	6,913
2014	1,714	320	354	97	1,968	2,134	175	661	113	106	717	52	16	8,427
2015	3,293	316	401	88	1,826	2,069	194	653	119	107	757	48	21	9,892
2016	4,467	324	401	86	1,895	2,164	199	686	135	108	811	46	28	11,350
2017	6,450	329	466	80	2,244	2,167	203	719	133	101	840	51	20	13,803
2018	8,376	334	455	77	3,121	2,244	212	690	150	103	830	52	31	16,675
2019	10,155	387	429	72	4,870	2,293	177	664	322	100	785	52	25	20,331

* Master's program totals include Special Non-Degree-Seeking graduate students.

Enrollment by Country of Residence, Fall 2019

Country	Undergraduate	Graduate	Institute Total
Afghanistan		1	1
Albania	1	2	3
Angola	2		2
Argentina	2	11	13
Armenia	1		1
Aruba	1		1
Australia	14	59	73
Austria		7	7
Azerbaijan		4	4
Bahamas	2		2
Bahrain	1		1
Bangladesh	9	37	46
Barbados	1	3	4
Belarus	1	11	12
Belgium	4	2	6
Belize		1	1
Benin		2	2
Bolivia	5	2	7
Bosnia and Herzegovina		2	2
Botswana	2		2
Brazil	63	56	119
Bulgaria	2	12	14
Burma (Myanmar)	6	1	7
Burundi		1	1
Cambodia	1		1
Cameroon	2	5	7
Canada	20	317	337
Chile	5	23	28
China	367	2,585	2,952
Colombia	19	45	64
Comoros		1	1
Congo		3	3
Costa Rica	14	21	35
Cote D'Ivoire	4	1	5
Croatia	1	1	2
Cyprus	1		1
Czech Republic	2	3	5
Dem. Republic of the C..	5	1	6
Denmark	4	2	6
Dominica		1	1
Dominican Republic	7	6	13
Ecuador	4	8	12
Egypt	8	47	55
El Salvador	7	3	10
Equatorial Guinea	1		1
Eritrea	1		1
Estonia	1		1
Ethiopia	5	12	17
Fiji	1		1
Finland	1		1

Enrollment by Country of Residence, Fall 2019

Country	Undergraduate	Graduate	Institute Total
France	13	158	171
Georgia	1	1	2
Germany	8	46	54
Ghana	1	12	13
Greece	4	37	41
Guatemala	8	3	11
Guinea	1		1
Haiti	1	1	2
Honduras	6	4	10
Hong Kong	15	31	46
Hungary	3	3	6
Iceland		1	1
India	217	2,252	2,469
Indonesia	26	28	54
Iran	4	94	98
Iraq		1	1
Ireland	8	10	18
Israel	3	17	20
Italy	12	26	38
Jamaica	6	4	10
Japan	21	24	45
Jordan	6	15	21
Kazakhstan	2	12	14
Kenya	6	23	29
Korea, Republic of (Sou..	199	337	536
Kuwait	4	6	10
Kyrgyzstan		2	2
Latvia		1	1
Lebanon	13	20	33
Lesotho		1	1
Lithuania	1	3	4
Luxembourg	2		2
Macao	2	2	4
Macedonia		2	2
Malawi		1	1
Malaysia	23	24	47
Mali	1		1
Malta		1	1
Martinique	1		1
Mauritius	1		1
Mexico	17	66	83
Moldova		1	1
Mongolia	1	4	5
Morocco	4	13	17
Namibia	1		1
Nepal	3	32	35
Netherlands	6	11	17
New Zealand	2	17	19
Nicaragua		1	1
Nigeria	17	69	86

Enrollment by Country of Residence, Fall 2019

Country	Undergraduate	Graduate	Institute Total
Norway	2	2	4
Oman		2	2
Pakistan	14	89	103
Panama	15	8	23
Paraguay	1	2	3
Peru	7	14	21
Philippines	3	19	22
Poland	3	9	12
Portugal	1	5	6
Qatar	2		2
Romania		12	12
Russia	18	32	50
Rwanda	1	5	6
Saint Lucia		2	2
Saudi Arabia	42	29	71
Senegal	3	1	4
Serbia	1		1
Serbia (Prior to 2001)		4	4
Sierra Leone		1	1
Singapore	27	97	124
Slovakia		3	3
Somalia	1	1	2
South Africa	2	22	24
Spain	45	27	72
Sri Lanka	5	9	14
Sudan	1		1
Sweden	5	1	6
Switzerland	4	9	13
Syria	3	3	6
Taiwan	21	125	146
Tanzania	1	1	2
Thailand	14	25	39
Togo		1	1
Trinidad and Tobago	6	4	10
Tunisia	6	10	16
Turkey	32	88	120
Turkmenistan		1	1
Uganda	1	3	4
Ukraine	1	5	6
United Arab Emirates	11		11
United Kingdom	18	39	57
Uruguay	2	4	6
Uzbekistan	2	3	5
Venezuela	35	14	49
Vietnam	26	54	80
West Bank		1	1
Yemen		4	4
Zambia		1	1
Zimbabwe	2	4	6
Institute Total	1,652	7,511	9,163

Enrollment by State of Residence*, Fall 2019

*Excludes international students

State/U.S. Territory	Undergraduate			Graduate			Institute Total
	Male	Female	Total	Male	Female	Total	
Alabama	48	23	71	130	34	164	235
Alaska	2	1	3	8	1	9	12
Arizona	28	16	44	121	29	150	194
Arkansas	12	6	18	27	7	34	52
California	180	85	265	1,088	273	1,361	1,626
Colorado	47	28	75	149	28	177	252
Connecticut	84	25	109	95	17	112	221
Delaware	11	9	20	14	6	20	40
District of Columbia	6	7	13	51	20	71	84
Florida	364	237	601	538	132	670	1,271
Georgia	5,757	4,126	9,883	2,059	775	2,834	12,717
Hawaii	7	3	10	22	6	28	38
Idaho	3		3	24	1	25	28
Illinois	107	72	179	243	50	293	472
Indiana	17	11	28	62	8	70	98
Iowa	13	8	21	31	9	40	61
Kansas	10	7	17	33	9	42	59
Kentucky	17	12	29	52	12	64	93
Louisiana	20	19	39	33	13	46	85
Maine	9	1	10	19	3	22	32
Maryland	138	93	231	246	65	311	542
Massachusetts	120	59	179	242	69	311	490
Michigan	17	14	31	168	29	197	228
Minnesota	31	14	45	102	18	120	165
Mississippi	11	5	16	31	4	35	51
Missouri	35	21	56	73	9	82	138
Montana	2	2	4	3	3	6	10
Nebraska	4	4	8	12	7	19	27
Nevada	10	2	12	26	8	34	46
New Hampshire	23	10	33	48	9	57	90
New Jersey	225	129	354	266	55	321	675
New Mexico	7	3	10	54	9	63	73
New York	181	85	266	429	110	539	805
North Carolina	175	113	288	235	67	302	590
North Dakota	2	1	3	2		2	5
Ohio	80	39	119	165	25	190	309
Oklahoma	9	3	12	40	6	46	58
Oregon	14	6	20	101	14	115	135

Enrollment by State of Residence*, Fall 2019

*Excludes international students

State/U.S. Territory	Undergraduate			Graduate			Institute Total
	Male	Female	Total	Male	Female	Total	
Pennsylvania	163	87	250	250	66	316	566
Rhode Island	15	2	17	9	5	14	31
South Carolina	62	35	97	123	28	151	248
South Dakota	1	1	2	6	1	7	9
Tennessee	101	57	158	164	28	192	350
Texas	156	93	249	641	151	792	1,041
Utah	9	6	15	91	11	102	117
Vermont	7	2	9	5	3	8	17
Virginia	189	94	283	433	128	561	844
Washington	40	21	61	227	77	304	365
West Virginia	6	4	10	18		18	28
Wisconsin	26	16	42	88	24	112	154
Wyoming	1		1	5	1	6	7
Guam	1		1	1		1	2
Puerto Rico	15	9	24	30	14	44	68
Virgin Islands, U.S.	1		1	1		1	2
Unknown	106	56	162	875	334	1,209	1,371
Institute Total	8,725	5,782	14,507	10,009	2,811	12,820	27,327

Enrollment by Georgia County of Residence*, Fall 2019

*Excludes international students

GA County	Undergraduate	Graduate	Institute Total
Appling	2	1	3
Baker	1		1
Baldwin	11	4	15
Banks	5		5
Barrow	30	8	38
Bartow	47	7	54
Ben Hill	4		4
Berrien	2		2
Bibb	78	11	89
Bleckley	4	1	5
Brantley	3		3
Brooks	1		1
Bryan	29	7	36
Bulloch	35	10	45
Burke	2		2
Butts	6		6
Calhoun	1		1
Camden	21	2	23
Carroll	84	7	91
Catoosa	21	5	26
Chatham	187	35	222
Chattahoochee		1	1
Chattooga	6	2	8
Cherokee	315	67	382
Clarke	49	24	73
Clayton	66	17	83
Cobb	1,206	411	1,617
Coffee	13	1	14
Colquitt	7		7
Columbia	144	43	187
Cook	3		3
Coweta	162	27	189
Crawford	2		2
Crisp	3		3
Dade	5		5
Dawson	10	3	13
Decatur	6	4	10
DeKalb	769	448	1,217
Dodge	6		6
Dougherty	29	5	34
Douglas	81	21	102
Early	1		1
Effingham	36	5	41
Elbert	2	2	4
Emanuel	4		4
Evans	1	1	2
Fannin	13	1	14

Enrollment by Georgia County of Residence*, Fall 2019

*Excludes international students

GA County	Undergraduate	Graduate	Institute Total
Fayette	290	50	340
Floyd	39	9	48
Forsyth	372	136	508
Franklin	5		5
Fulton	2,373	1,053	3,426
Gilmer	6	2	8
Glynn	38	5	43
Gordon	22	3	25
Grady	4	1	5
Greene	5		5
Gwinnett	1,758	361	2,119
Habersham	22	3	25
Hall	133	29	162
Haralson	8	1	9
Harris	16	2	18
Hart	3		3
Heard	3	1	4
Henry	162	26	188
Houston	109	27	136
Irwin	4		4
Jackson	53	4	57
Jasper	1	1	2
Jeff Davis	2		2
Jefferson	1	1	2
Jones	7	1	8
Lamar	8	1	9
Lanier	1		1
Laurens	10	2	12
Lee	16	6	22
Liberty	10	2	12
Lincoln	2	1	3
Long	1		1
Lowndes	52	8	60
Lumpkin	11	5	16
Macon		2	2
Madison	3	2	5
McDuffie	2	1	3
McIntosh	1		1
Meriwether	5		5
Mitchell	9		9
Monroe	10	1	11
Montgomery	1		1
Morgan	17		17
Murray	7	2	9
Muscogee	97	16	113
Newton	40	9	49
Oconee	66	12	78

Enrollment by Georgia County of Residence*, Fall 2019

*Excludes international students

GA County	Undergraduate	Graduate	Institute Total
Paulding	51	21	72
Peach	6	4	10
Pickens	4	4	8
Pierce	6	2	8
Pike	9		9
Polk	5	2	7
Pulaski	4		4
Putnam	6		6
Rabun	5		5
Richmond	54	15	69
Rockdale	42	8	50
Schley	1		1
Screven	4		4
Spalding	18	3	21
Stephens	7		7
Sumter	10		10
Tattnall	6		6
Thomas	26	4	30
Tift	14	1	15
Toombs	9		9
Towns	2	2	4
Treutlen	2	1	3
Troup	37	5	42
Twiggs	1		1
Union	9	2	11
Upson	6	2	8
Walker	13		13
Walton	59	5	64
Ware	10	1	11
Washington	9		9
Wayne	11		11
White	8		8
Whitfield	50	9	59
Wilkes	1	1	2
Glascocock	1		1
Candler	1		1
Dooly	2		2
Hancock	1		1
Jenkins		1	1
Marion	1		1
Randolph	1		1
Terrell	1		1
Wilcox	3		3
Unknown	1		1
Institute Total	9,835	3,060	12,895



Degrees Awarded

2019 Fact Book

Summary of Degrees Conferred by College and Degree Level, Ten-Year History

College	Degree	2010	2011	2012	2013	2014	2015	2016	2017	2018	2019
College of Computing	Bachelor's	179	234	222	245	286	317	388	477	624	648
	Master's	218	271	179	208	205	190	326	707	1,048	1,223
	Ph.D.	40	33	47	53	46	53	52	34	41	45
	Total	437	538	448	506	537	560	766	1,218	1,713	1,916
College of Design	Bachelor's	148	161	148	114	100	97	76	69	73	73
	Master's	186	191	192	177	136	167	201	173	218	213
	Ph.D.	10	14	14	9	8	9	15	17	14	18
	Total	344	366	354	300	244	273	292	259	305	304
College of Engineering	Bachelor's	1,644	1,745	1,663	1,823	1,978	1,986	2,142	2,343	2,093	2,196
	Master's	948	988	1,043	1,051	1,103	1,040	1,227	1,083	1,175	1,191
	Ph.D.	263	294	309	312	378	358	346	358	345	330
	Total	2,855	3,027	3,015	3,186	3,459	3,384	3,715	3,784	3,613	3,717
College of Sciences	Bachelor's	242	270	272	321	314	274	250	219	251	271
	Master's	120	111	105	112	129	132	147	143	153	156
	Ph.D.	82	86	94	90	102	81	91	74	108	112
	Total	444	467	471	523	545	487	488	436	512	539
Ivan Allen College	Bachelor's	241	242	219	209	198	194	167	130	127	173
	Master's	75	77	92	78	84	47	59	80	68	75
	Ph.D.	15	14	15	15	13	16	17	21	17	12
	Total	331	333	326	302	295	257	243	231	212	260
Scheller College of Business	Bachelor's	388	410	349	409	392	407	397	370	348	361
	Master's	223	251	320	335	330	306	336	338	380	380
	Ph.D.	6	8	4	8	5	9	10	4	5	9
	Total	617	669	673	752	727	722	743	712	733	750
Institute	Bachelor's	2,842	3,062	2,873	3,121	3,268	3,275	3,420	3,608	3,516	3,722
	Master's	1,770	1,889	1,931	1,961	1,987	1,882	2,296	2,524	3,042	3,238
	Ph.D.	416	449	483	487	552	526	531	508	530	526
Institute Total		5,028	5,400	5,287	5,569	5,807	5,683	6,247	6,640	7,088	7,486

Bachelor's Degrees Conferred by College, Ten-Year History

College	Major	2010	2011	2012	2013	2014	2015	2016	2017	2018	2019	
College of Computing	Computational Media	22	47	42	25	40	29	23	19	27	28	
	Computer Science	157	187	180	220	246	288	365	458	597	620	
	Total	179	234	222	245	286	317	388	477	624	648	
College of Design	Architecture	68	75	61	56	46	50	37	29	26	30	
	Building Construction	56	38	47	19	21	17	9				
	Industrial Design	24	48	40	39	33	30	30	40	47	39	
	Music Technology										4	
	Total	148	161	148	114	100	97	76	69	73	73	
College of Engineering	Aerospace Engineering	139	147	117	146	142	157	162	211	174	207	
	Biomedical Engineering	143	157	147	175	231	214	255	257	245	239	
	Chemical and Biomolecular Eng	100	128	142	158	165	172	189	214	217	220	
	Civil Engineering	174	183	179	170	152	152	130	154	127	129	
	Civil Engineering - REP	19	21	25	21							
	Computer Engineering	67	72	64	72	84	109	129	131	153	151	
	Computer Engineering - REP	8	3	1	1							
	Electrical Engineering	210	183	188	225	230	239	242	245	202	190	
	Electrical Engineering - REP	10	17	15	13	3						
	Environmental Engineering	15	14	36	32	46	32	39	39	39	37	
	Industrial Engineering	302	312	282	315	350	345	393	404	337	356	
	Materials Science & Engr	23	29	23	30	48	41	69	73	70	82	
	Mechanical Engineering	358	394	365	362	450	479	510	594	499	553	
	Mechanical Engineering - REP	29	17	31	41	4						
	Nuclear & Radiological Engr	27	39	22	38	55	32	23	21	30	32	
	Polymer & Fiber Engr	20	29	26	24	18	14					
Unknown							1					
	Total	1,644	1,745	1,663	1,823	1,978	1,986	2,142	2,343	2,093	2,196	
College of Sciences	Applied Mathematics	21	28	33	39	20	34	20	23			
	Applied Physics	1		2		3		3	2	1	2	
	Biochemistry	24	49	35	65	57	38	49	40	45	62	
	Biology	92	103	96	108	119	95	77	73	71	68	
	Chemistry	31	21	24	27	25	19	15	12	22	22	
	Discrete Mathematics	8	8	8	5	6	4	9	9	4	3	
	Earth & Atmospheric Sciences	10	15	14	9	18	6	14	14	11	5	
	Mathematics										31	42
	Neuroscience											7
	Physics	30	22	29	33	28	34	30	26	31	42	
	Psychology	25	24	31	35	38	44	33	20	35	18	
	Total	242	270	272	321	314	274	250	219	251	271	
Ivan Allen College	Applied Lang/Intercultural St		1	4	6	9	21	18	11	11	14	
	Computational Media	26	39	21	25	32	28	24	23	18	23	
	Econ & Int'l Affairs	9	12	10	18	12	11	13	4	8	7	

Bachelor's Degrees Conferred by College, Ten-Year History

College	Major	2010	2011	2012	2013	2014	2015	2016	2017	2018	2019
Ivan Allen College	Economics	21	24	18	17	25	18	21	16	17	23
	Global Econ/Mod Lang	4	5	7	4	2	7	1		1	1
	History, Technology, & Society	14	28	20	15	26	18	15	13	4	11
	Int'l Affairs & Mod Lang	37	24	31	38	13	23	9	8	12	10
	International Affairs	64	53	45	22	29	26	34	20	21	32
	Lit., Media, & Communication						2	24	23	20	33
	Public Policy	14	20	13	18	17	14	8	12	15	19
	Science, Technology, & Culture	52	36	50	46	33	26				
	Total	241	242	219	209	198	194	167	130	127	173
Scheller College of Business	Business Administration				93	113	189	333	369	346	360
	Management	388	410	349	316	279	218	64	1	2	1
	Total	388	410	349	409	392	407	397	370	348	361
Institute Total		2,842	3,062	2,873	3,121	3,268	3,275	3,420	3,608	3,516	3,722

Master's Degrees Conferred by College, Ten-Year History

College	Major	2010	2011	2012	2013	2014	2015	2016	2017	2018	2019
College of Computing	Analytics							4	7	17	12
	Bioengineering										1
	Computational Sci & Engr	5	6	10	25	14	17	37	35	53	46
	Computer Science	180	213	123	143	153	125	249	583	941	1,114
	Cybersecurity									12	25
	Human-Computer Interaction	19	21	24	19	18	30	24	26	25	25
	Information Security	14	31	22	21	20	18	12	56		
	Total	218	271	179	208	205	190	326	707	1,048	1,223
College of Design	Architectural Technology								6	66	55
	Architecture	54	71	62	61	45	48	72	31	3	
	Building Construction	69	47	62	47	35	35	48	44	47	40
	City Planning	49	57	39	42	37	36	37	46	42	41
	Geographic Info Science & Tech						3	5	8	9	7
	Human-Computer Interaction						2	10	9	13	17
	Industrial Design	9	12	14	9	6	25	18	11	15	20
	Music Technology	5	4	13	9	9	12	9	16	11	9
	Real Estate Development									1	10
	Urban Design			2	9	4	6	2	2	11	14
	Total	186	191	192	177	136	167	201	173	218	213
College of Engineering	Aerospace Engineering	127	138	143	132	147	125	143	115	143	104
	Analytics							11	15	22	70
	Applied Systems Engineering			8	15	26	32	28	22	24	26
	Bioengineering	5	7	11	8	7	6	4	4	10	5
	Biomedical Engineering	1	1	2		2	1	2	2	3	1
	Biomedical Innovation/Develop						10	21	30	28	34
	Chemical Engineering	15	10	13	25	27	20	20	22	35	19
	Civil Engineering	74	87	79	77	89	93	85	97	102	97
	Computational Sci & Engr		1	1	1	2	8	16	37	28	38
	Electrical & Computer Engr	307	317	343	290	335	334	457	311	354	350
	Engineering Sci & Mechanics	3	3	3	4	3	4	2	4	4	2
	Environmental Engineering	20	22	21	33	29	29	37	30	25	29
	Health Systems	16	10	7	5	5	7	6	6	3	4
	Industrial Engineering	105	100	72	83	61	26	31	30	26	32
	International Logistics	32	2	14	18	15	9	9	2		
	Manufacturing Leadership									6	11
	Materials Science & Engr	5	12	15	12	14	18	16	9	13	9
	Mechanical Engineering	153	188	226	213	185	204	204	200	225	231
	Medical Physics	17	16	7	13	11	10	11	2	10	6
	Nuclear & Radiological Engr	4	8	11	12	13	9	10			
Nuclear Engineering						5	8	6	5	6	
Operations Research	24	32	11	26	36	19	24	31	29	27	

Master's Degrees Conferred by College, Ten-Year History

College	Major	2010	2011	2012	2013	2014	2015	2016	2017	2018	2019
College of Engineering	Paper Science Engineering	1					1	1		2	
	Polymer, Textile & Fiber Engr	2	2	2							
	Quanta/Computation Fin	25	14	22	20	34	16	17	13	15	14
	Statistics	12	18	20	18	11	8	10	20	17	19
	Supply Chain Engineering			12	46	51	46	54	48	46	57
	Sustainable Electrical Energy								27		
	Total	948	988	1,043	1,051	1,103	1,040	1,227	1,083	1,175	1,191
College of Sciences	Bioinformatics	16	10	10	13	20	15	20	23	33	37
	Biology	9	10	12	8	8	12	7	5	6	11
	Chemistry	17	16	17	14	19	21	9	19	12	11
	Computational Sci & Engr		3	1		2	1	9		10	5
	Earth & Atmospheric Sciences	17	11	12	9	13	8	7	11	12	1
	Human-Computer Interaction	2	2	1	1	4	6	4	7	5	7
	Mathematics	13	16	8	12	9	15	21	8	8	15
	Physics	8	11	10	16	15	6	19	19	18	15
	Prosthetics & Orthotics	10	10	9	10	11	14	14	12	14	14
	Psychology	11	10	8	9	10	11	11	13	10	4
	Quanta/Computation Fin	16	12	16	14	9	17	17	21	16	24
	Statistics	1		1	6	9	6	9	5	9	12
	Total	120	111	105	112	129	132	147	143	153	156
Ivan Allen College	Cybersecurity										5
	Digital Media	12	16	17	7	14	9	11	16	13	10
	Economics	12	19	22	19	21	1	16	18	14	31
	Hist & Soc of Tech & Science	7	5	6	6	3	4	6	4	4	5
	Human-Computer Interaction	5	2	5	4	7	2	5	7	9	6
	International Affairs	25	24	25	16	19	20	12	26	16	10
	Public Policy	14	11	17	26	20	11	9	9	12	8
		Total	75	77	92	78	84	47	59	80	68
Scheller College of Business	Analytics							14	14	17	20
	Business Administration				2	75	138	176	180	210	202
	Management	116	154	226	237	138	65	13	5	4	3
	Management of Technology	35	46	40	47	46	54	62	64	63	64
	MBA-Global Business	52	44	31	31	54	34	58	57	70	61
	Quanta/Computation Fin	20	7	23	18	17	15	13	18	16	30
	Total	223	251	320	335	330	306	336	338	380	380
Institute Total		1,770	1,889	1,931	1,961	1,987	1,882	2,296	2,524	3,042	3,238

Ph.D. Degrees Conferred by College, Ten-Year History

College	Major	2010	2011	2012	2013	2014	2015	2016	2017	2018	2019
College of Computing	Algor, Combntcrs & Optimization	2	2	3	3		5	3	3	2	3
	Bioinformatics			1	1		1				
	Computational Sci & Engr	1	2	2	1	4	4	2	2	9	9
	Computer Science	36	25	31	32	39	30	40	24	23	27
	Human-Centered Computing	1	4	10	13	1	6	3	4	4	5
	Robotics				3	2	7	4	1	3	1
	Total	40	33	47	53	46	53	52	34	41	45
College of Design	Architecture	10	14	13	3	3	3	10	10	7	5
	Building Construction					1	4	4	2	3	6
	City & Regional Planning			1	6	4	2	1	5	3	5
	Music Technology									1	2
	Total	10	14	14	9	8	9	15	17	14	18
College of Engineering	Aerospace Engineering	29	31	38	33	47	35	33	46	41	44
	Algor, Combntcrs & Optimization	1	2		2		1		1	1	1
	Bioengineering	23	20	23	19	23	13	17	12	13	15
	Bioinformatics					2					
	Biomedical Engineering	10	16	10	9	19	14	19	15	22	27
	BMED Joint Emory/PKU				1	3	1	1	7	5	3
	Chemical Engineering	30	41	22	22	36	41	34	39	35	24
	Civil Engineering	16	25	31	35	22	32	27	22	24	22
	Computational Sci & Engr					1				3	3
	Electrical & Computer Engr	75	72	105	97	99	108	92	97	91	83
	Engineering Sci & Mechanics								1		
	Environmental Engineering	5	8	5	6	15	9	5	7	5	9
	Industrial Engineering	21	21	20	25	21	19	10	13	15	15
	Materials Science & Engr	9	15	18	11	15	16	32	19	26	26
	Mechanical Engineering	29	26	24	33	51	49	48	53	38	43
	Nuclear & Radiological Engr	8	4	3	5	7	6	8	8	5	1
	Nuclear Engineering				1			3	1	6	3
	Operations Research				3	3	5	9	15	10	5
	Paper Science Engineering	1									
	Polymer, Textile & Fiber Engr	6	13	8	10	8	9	4	2		
Robotics			2		6		4		5	6	
Total	263	294	309	312	378	358	346	358	345	330	
College of Sciences	Algor, Combntcrs & Optimization		1	4	3	1	2	1	1	2	1
	Applied Physiology	1	1	4	2	3	4	5	2	4	1
	Bioinformatics	1	3	1	5	3	3	3	3	3	7

Ph.D. Degrees Conferred by College, Ten-Year History

College	Major	2010	2011	2012	2013	2014	2015	2016	2017	2018	2019	
College of Sciences	Biology	11	7	12	10	16	7	7	8	9	11	
	Chemistry	27	32	24	26	28	27	30	22	35	42	
	Computational Sci & Engr				1	2	2		1	1	2	
	Earth & Atmospheric Sciences	9	10	14	6	17	6	10	7	20	10	
	Mathematics	9	8	6	13	7	9	7	3	11	8	
	Paper Science Engineering	1		1	4							
	Physics	10	20	13	8	13	13	20	18	17	19	
	Psychology	13	4	15	12	12	8	8	9	6	10	
	Quantitative Biosciences											1
	Total		82	86	94	90	102	81	91	74	108	112
Ivan Allen College	Digital Media	5	4		5	1	4	4	1		3	
	Economics						1	3	4	3	3	
	Hist & Soc of Tech & Science	2	1	3	1	2	2	2	2	3	2	
	Int'l Affairs, Sci, & Techngy					1	1	1	4	1	1	
	Public Policy	3	5	5	6	6	5	5	5	4	3	
	Public Policy/Joint Progrm	5	4	7	3	3	3	2	5	6		
	Total	15	14	15	15	13	16	17	21	17	12	
Scheller College of Business	Management	6	8	4	8	5	9	10	4	5	9	
	Total	6	8	4	8	5	9	10	4	5	9	
Institute Total		416	449	483	487	552	526	531	508	530	526	

Degrees Conferred by College, Ethnicity, and Gender, AY 2019

Degree	Ethnicity	College of Computing			College of Design			College of Engineering			College of Sciences			Ivan Allen College			Scheller College of Business			Institute		Institute Total
		F	M	Total	F	M	Total	F	M	Total	F	M	Total	F	M	Total	F	M	Total	F	M	
Bachelor's	Asian	59	183	242	5	7	12	155	278	433	38	20	58	20	13	33	49	26	75	326	527	853
	Black or African American	8	21	29	2	1	3	43	83	126	7	9	16	12	8	20	8	14	22	80	136	216
	Hispanic or Latino	11	22	33	6	2	8	43	121	164	10	5	15	2	2	4	10	8	18	82	160	242
	White	40	170	210	18	22	40	350	765	1,115	79	56	135	62	39	101	108	94	202	104	238	342
	International	23	62	85	2	2	4	66	153	219	7	13	20	1		1	5	8	13	657	1,146	1,803
	Other/Unknown	12	37	49	6		6	40	99	139	10	17	27	9	5	14	20	11	31	97	169	266
	Total	153	495	648	39	34	73	697	1,499	2,196	151	120	271	106	67	173	200	161	361	1,346	2,376	3,722
Master's	Asian	51	146	197	5	1	6	35	88	123	9	10	19	5	2	7	10	35	45	115	282	397
	Black or African American	5	20	25	7	11	18	4	24	28	2	2	4	6	4	10	20	27	47	44	88	132
	Hispanic or Latino	1	37	38	5	9	14	15	36	51	3	2	5	3	1	4	6	13	19	33	98	131
	White	43	439	482	30	38	68	72	299	371	17	31	48	13	19	32	52	148	200	400	903	1,303
	International	108	342	450	52	53	105	179	415	594	31	44	75	14	7	21	16	42	58	227	974	1,201
	Other/Unknown	7	24	31	1	1	2	8	16	24	2	3	5		1	1	5	6	11	23	51	74
	Total	215	1,008	1,223	100	113	213	313	878	1,191	64	92	156	41	34	75	109	271	380	842	2,396	3,238
Ph.D.	Asian	1	3	4	1		1	8	21	29	4	3	7	2	2	4	1		1	17	29	46
	Black or African American	1		1				2	7	9	1	2	3							4	9	13
	Hispanic or Latino					1	1	3	9	12	1	2	3							4	12	16
	White	2	9	11	2	3	5	18	81	99	10	38	48	2	5	7	1		1	62	205	267
	International	5	23	28	2	9	11	38	134	172	15	33	48	1		1	1	6	7	35	136	171
	Other/Unknown	1		1					9	9	1	2	3							2	11	13
	Total	10	35	45	5	13	18	69	261	330	32	80	112	5	7	12	3	6	9	124	402	526
Institute Total		378	1,538	1,916	144	160	304	1,079	2,638	3,717	247	292	539	152	108	260	312	438	750	2,312	5,174	7,486

Degrees Conferred by Country of Residence, AY 2019

Country	Bachelor's	Master's	Ph.D.	Institute Total
Angola	1			1
Argentina	2	3		5
Australia		3		3
Bangladesh	1	1	3	5
Belarus			1	1
Belgium	1			1
Belize	1			1
Bolivia	1			1
Brazil	9	6	1	16
Bulgaria		2	2	4
Burkina Faso	1			1
Burma (Myanmar)		1		1
Cameroon		1		1
Canada	2	27	3	32
Chile		9	4	13
China	88	478	111	677
Colombia	4	7	4	15
Costa Rica	4	1	1	6
Cote D'Ivoire	1			1
Cyprus		1		1
Czech Republic		1		1
Dem. Republic of the Congo		1		1
Ecuador	1	3		4
Egypt	1	6	1	8
El Salvador		2		2
Estonia		1		1
France		77	3	80
Gabon	1			1
Georgia	1			1
Germany	1	10	2	13
Ghana	1	1		2
Greece	2	4		6
Guatemala		1		1
Haiti		1		1
Hong Kong	2	3	1	6
Hungary		1		1
India	48	426	44	518
Indonesia	8	6		14
Iran	1	14	8	23
Israel		1		1
Italy	2	4	3	9
Jamaica			1	1
Japan	3	3	1	7
Jordan		1		1

Degrees Conferred by Country of Residence, AY 2019

Country	Bachelor's	Master's	Ph.D.	Institute Total
Kazakhstan		1		1
Kenya		1		1
Korea, Republic of (South)	71	40	34	145
Kuwait	1	2	1	4
Lebanon	3	4	3	10
Luxembourg		1		1
Malaysia	4	8	1	13
Mauritius		2		2
Mexico	7	10	2	19
Morocco	1	6		7
Nepal		7		7
New Zealand	2	1		3
Nigeria	11	6		17
Pakistan	2	15	6	23
Panama	1	8	1	10
Paraguay	1			1
Peru		1		1
Philippines	1			1
Portugal	1	2		3
Romania	1			1
Russia	5	5		10
Saudi Arabia	1	7	2	10
Senegal	1			1
Singapore	1	9	2	12
Slovakia		1		1
Spain	4	3	1	8
Sri Lanka	1		1	2
Sudan		1		1
Syria		1		1
Taiwan	1	23	9	33
Tanzania		1		1
Thailand	3	3		6
Trinidad and Tobago	1	1		2
Tunisia		2	1	3
Turkey	10	8	6	24
Uganda		1		1
United Arab Emirates		1		1
United Kingdom	2	5		7
Uruguay	1			1
Venezuela	8	1		9
Vietnam	8	7	3	18
West Bank		1		1
Institute Total	342	1,303	267	1,912

Degrees Conferred by State of Residence, AY 2019

State/U.S. Territory	Bachelor's	Master's	Ph.D.	Institute Total
Alabama	21	31	5	57
Alaska	1	3		4
Arizona	12	22		34
Arkansas	3	4		7
California	73	138	20	231
Colorado	18	9	1	28
Connecticut	16	10	5	31
Delaware	6	4		10
District of Columbia	3	13	1	17
Florida	160	98	16	274
Georgia	2,218	698	53	2,969
Hawaii	1	4	1	6
Idaho	2	1		3
Illinois	52	36	9	97
Indiana	8	16		24
Iowa	3	5		8
Kansas	1	3	1	5
Kentucky	11	8	2	21
Louisiana	10	11	2	23
Maine	4	4	1	9
Maryland	49	26	9	84
Massachusetts	47	36	6	89
Michigan	8	21	4	33
Minnesota	7	9	3	19
Mississippi	3	7	3	13
Missouri	12	14	2	28
Nebraska	1	5		6
Nevada	2	1	1	4
New Hampshire	5	3	1	9
New Jersey	83	43	5	131
New Mexico	4	17	1	22
New York	59	71	12	142
North Carolina	63	44	10	117
Ohio	25	34	2	61
Oklahoma	4	10	2	16
Oregon	4	15		19
Pennsylvania	66	32	13	111
Rhode Island	1	3		4
South Carolina	30	28	4	62
South Dakota		1		1
Tennessee	38	22	6	66

Degrees Conferred by State of Residence, AY 2019

State/U.S. Territory	Bachelor's	Master's	Ph.D.	Institute Total
Texas	79	101	19	199
Utah	1	7	1	9
Vermont		2		2
Virginia	76	53	6	135
Washington	13	39	4	56
West Virginia	2	2		4
Wisconsin	8	14	2	24
Puerto Rico	8	8	3	19
North Dakota	1		1	2
Wyoming	1	1		2
Institute Total	3,323	1,787	237	5,347

Degrees Conferred by Georgia County of Residence, AY 2019

County	Bachelor's	Master's	Ph.D.	Institute Total
Barrow	7	1		8
Bartow	11		1	12
Bibb	13	4		17
Bryan	15	3		18
Bulloch	10	3		13
Camden	2	1		3
Carroll	15	1		16
Catoosa	6	3		9
Chatham	32	7		39
Cherokee	63	10	2	75
Clarke	6	3		9
Clayton	16	5		21
Cobb	269	108	5	382
Columbia	57	11		68
Cook	3			3
Coweta	40	6		46
DeKalb	154	83	10	247
Dougherty	6			6
Douglas	18	5	1	24
Effingham	8	1		9
Fayette	71	9	1	81
Floyd	10	3		13
Forsyth	68	29		97
Fulton	583	277	17	877
Gilmer	1	1		2
Glynn	18			18
Gordon	2			2
Gwinnett	388	100	3	491
Habersham	2			2
Hall	31	6		37
Harris	6	1	1	8
Henry	23	4		27
Houston	29	8	1	38
Jackson	12	4		16
Jones	1			1
Lamar	4			4
Lee	7	3	1	11
Liberty	3			3
Lowndes	10	3	1	14
Lumpkin	2	1		3
Morgan	3	1		4
Murray	3			3
Muscogee	22	3		25
Newton	12	2	1	15
Oconee	15	1		16
Oglethorpe	1			1
Paulding	6	4		10
Pickens	2			2
Richmond	12	4		16
Rockdale	8	2	1	11
Thomas	6			6
Tift	5			5
Toombs	4	2		6

Degrees Conferred by Georgia County of Residence, AY 2019

County	Bachelor's	Master's	Ph.D.	Institute Total
Troup	10			10
Walker	1			1
Walton	9	3		12
Ware	2			2
Wayne	3	1		4
White	2			2
Whitfield	14	1		15
Baldwin	3	1		4
Bleckley	3			3
Dade	1			1
Dawson	3			3
Decatur	2	1	1	4
Emanuel	1			1
Fannin	2			2
Franklin	2		1	3
Haralson	1			1
Jasper	1			1
Macon	1			1
Meriwether	1			1
Peach	2	1	1	4
Towns	4			4
Upson	1			1
Wilkes			1	1
Worth	1			1
Jeff Davis	1			1
Laurens		1		1
Monroe	1	1		2
Twiggs	1			1
Washington	3			3
Appling	3			3
Banks	1	1		2
Brooks	1			1
Butts	2			2
Charlton	1			1
Coffee	2			2
Crawford			1	1
Evans			1	1
Glascok	1			1
Grady	1		1	2
Irwin	1			1
Lanier	1			1
Lincoln	1			1
Madison	1			1
McDuffie	1			1
Mitchell	1			1
Pierce	1			1
Pike	5			5
Putnam	2	1		3
Rabun	2	2		4
Screven	1		1	2
Spalding	3			3
Sumter	1			1
Institute Total	2,230	737	54	3,021



Institute Information

2019 Fact Book

Student Grades by College & Percent, Fall Semester 2019

College	Level	A	B	C	D	F	S*	U*	I*	W*	V*	AVG Grade
College of Computing	Lower	45.6	23.4	10.5	2.7	2.1	0.1	10.8	0.1	0.0	4.8	3.28
	Upper	65.9	18.6	6.0	0.8	1.5	0.1	0.1	0.0	0.2	6.8	3.58
	Grad	48.6	17.8	3.4	0.9	1.4	0.1	4.6	0.1	2.9	20.1	3.54
	Computing Total	52.0	18.9	5.2	1.2	1.5	0.1	4.6	0.1	1.8	14.6	3.51
College of Design	Lower	66.2	21.9	2.9	0.7	0.9	0.2	3.7	0.0	0.0	3.5	3.64
	Upper	79.9	13.3	2.8	0.3	0.3	0.1	0.1	0.0	0.1	3.1	3.78
	Grad	61.6	16.0	1.6	0.2	0.3	0.0	11.5	0.1	6.4	2.4	3.74
	Design Total	70.4	16.6	2.5	0.4	0.5	0.1	4.6	0.0	2.0	3.0	3.73
College of Engineering	Lower	52.9	26.8	10.8	2.4	1.6	0.1	0.8	0.0	0.3	4.4	3.34
	Upper	50.1	27.9	11.4	2.4	0.9	0.1	0.6	0.0	3.1	3.3	3.34
	Grad	35.0	13.8	1.6	0.2	0.2	0.0	37.5	0.5	7.0	4.1	3.63
	Engineering Total	45.2	22.8	7.9	1.6	0.8	0.1	13.7	0.2	4.1	3.8	3.41
College of Sciences	Lower	48.7	27.8	12.4	3.8	2.3	0.1	1.0	0.1	0.1	3.8	3.23
	Upper	55.8	23.8	8.9	2.5	1.2	0.1	1.4	0.0	1.6	4.8	3.42
	Grad	35.5	6.6	0.7	0.3	0.1	0.0	34.1	0.5	18.3	3.9	3.79
	Sciences Total	48.4	23.1	9.5	2.9	1.6	0.1	6.7	0.1	3.6	4.1	3.33
Ivan Allen College	Lower	65.9	19.3	5.2	1.2	0.8	0.1	3.4	0.3	0.2	3.8	3.61
	Upper	70.7	17.0	3.4	0.6	0.7	0.2	2.4	0.1	0.5	4.4	3.69
	Grad	52.3	13.0	1.2	0.1	0.2	0.0	23.4	0.0	7.9	1.8	3.75
	Ivan Allen Total	66.3	17.6	4.0	0.8	0.7	0.1	5.3	0.2	1.2	3.8	3.66
Scheller College of Business	Lower	48.3	29.9	12.1	3.7	2.1	0.0	1.1	0.1	0.0	2.7	3.23
	Upper	66.5	21.8	6.1	1.5	0.6	0.0	1.2	0.0	0.1	2.2	3.58
	Grad	74.0	15.3	1.6	0.1	0.1	0.1	4.8	0.1	1.9	2.1	3.79
	Scheller Total	67.7	19.9	4.8	1.1	0.5	0.0	2.8	0.1	0.9	2.2	3.63
College of Registrar	Lower	76.5	3.0	0.6	0.1	0.3	0.0	12.2	0.2	5.2	2.0	3.93
	Upper	48.8	4.6	0.5	0.2	0.1	0.0	6.0	0.0	37.0	2.8	3.88
	Grad	10.2	0.2	0.0	0.0	0.0	0.0	48.3	1.1	37.3	2.9	3.98
	Registrar Total	50.5	3.2	0.4	0.1	0.2	0.0	16.0	0.3	26.6	2.6	3.91
Institute	Lower	54.2	24.1	9.5	2.6	1.7	0.1	3.5	0.1	0.4	3.9	3.37
	Upper	58.0	22.6	8.1	1.7	0.9	0.1	1.1	0.0	3.5	4.0	3.48
	Grad	45.5	14.7	2.2	0.5	0.6	0.1	19.7	0.3	6.4	10.0	3.64
	Institute Total	52.5	20.2	6.4	1.5	1.0	0.1	8.4	0.1	3.7	6.1	3.49

*S Satisfactory completion of a course taken under pass/fail, or in which no other letter grade may be assigned

*U Unsatisfactory completion of a course taken under pass/fail, or in which no other letter grade may be assigned

*I Incomplete

*W Withdrew

*V Audit (no academic achievement implied)

Student Semester Credit Hours Earned by College and Division, Fiscal Years 2015-2019

	2015	2016	2017	2018	2019
College of Computing					
Lower Level	24,429	26,756	27,375	28,656	32,267
Upper Level	16,714	19,561	23,151	25,216	30,158
Graduate	34,331	45,108	56,426	71,636	103,186
Computing Total	75,474	91,425	106,952	125,508	165,611
College of Design					
Lower Level	8,014	7,832	7,924	8,060	9,549
Upper Level	8,308	8,397	8,871	8,625	9,824
Graduate	10,546	11,408	11,920	12,563	11,826
Design Total	26,868	27,637	28,715	29,248	31,199
College of Engineering					
Lower Level	36,590	36,545	36,338	34,372	32,395
Upper Level	96,608	98,218	97,980	96,581	91,452
Graduate	130,009	126,216	130,832	135,618	153,299
Engineering Total	263,207	260,979	265,150	266,571	277,146
College of Sciences					
Lower Level	87,328	86,077	87,322	88,622	92,266
Upper Level	18,866	18,863	19,903	22,450	26,030
Graduate	32,852	32,181	32,662	33,833	30,860
Sciences Total	139,046	137,121	139,887	144,905	149,156
Ivan Allen College					
Lower Level	44,907	45,858	42,918	41,829	42,824
Upper Level	24,987	25,286	25,939	26,767	26,360
Graduate	6,158	6,625	6,687	6,441	9,817
Ivan Allen Total	76,052	77,769	75,544	75,037	79,001
Scheller College of Business					
Lower Level	7,782	7,410	7,160	7,023	7,311
Upper Level	23,593	23,529	21,126	21,205	21,413
Graduate	19,617	20,754	22,170	22,764	28,776
Business Total	50,992	51,693	50,456	50,992	57,500
College of the Registrar					
Lower Level	2,783	3,174	2,868	2,990	4,438
Upper Level	465	439	432	513	4,096
Graduate	771	809	811	893	1,236
Registrar Total	4,019	4,422	4,111	4,396	9,770
Institute					
Lower Level	211,833	213,652	211,905	211,552	221,050
Upper Level	189,541	194,293	197,402	201,357	209,333
Graduate	234,284	243,100	261,508	283,748	338,999
Institute Total	635,658	651,045	670,815	696,657	769,382

Retention Rates for Entering Freshmen

Entering Class Summer/Fall	Retained After 1 Year	Retained After 2 Years	Retained After 3 Years	Retained After 4 Years	Retained After 5 Years	Retained After 6 Years
1997	86%	79%	75%	74%	74%	74%
1998	86%	80%	77%	75%	75%	75%
1999	90%	83%	81%	80%	78%	79%
2000	90%	84%	81%	79%	79%	79%
2001	91%	84%	82%	81%	80%	80%
2002	90%	84%	82%	80%	80%	80%
2003	92%	86%	84%	82%	82%	82%
2004	92%	86%	84%	82%	82%	83%
2005	92%	87%	84%	82%	82%	82%
2006	92%	87%	84%	83%	82%	82%
2007	93%	88%	87%	84%	85%	85%
2008	93%	88%	86%	85%	84%	84%
2009	94%	90%	88%	87%	88%	88%
2010	95%	92%	90%	89%	89%	89%
2011	95%	91%	89%	88%	88%	89%
2012	96%	92%	90%	90%	90%	90%
2013	96%	94%	93%	92%	92%	92%
2014	97%	94%	92%	92%	92%	
2015	97%	95%	94%	93%		
2016	97%	94%	94%			
2017	97%	95%				
2018	97%					

Graduation Rates for Entering Freshmen

Entering Class Summer/Fall	Graduated by 4th Year	Graduated by 5th Year	Graduated by 6th Year	Graduated by 7th Year	Graduated by 8th Year
1997	24%	60%	69%	72%	73%
1998	26%	62%	72%	74%	75%
1999	29%	67%	76%	78%	78%
2000	34%	69%	77%	79%	79%
2001	33%	69%	78%	79%	80%
2002	31%	70%	77%	79%	79%
2003	31%	71%	79%	81%	82%
2004	33%	72%	80%	81%	82%
2005	31%	72%	79%	81%	81%
2006	34%	72%	79%	81%	82%
2007	41%	76%	82%	84%	84%
2008	37%	75%	82%	83%	84%
2009	40%	78%	85%	87%	87%
2010	41%	80%	86%	88%	89%
2011	39%	80%	85%	87%	88%
2012	40%	82%	87%	89%	
2013	46%	85%	90%		
2014	46%	86%			
2015	51%				

Alumni as of June 2019

Top Countries of Residence

United States of America	147,850
India	2,061
China	1,995
France	1,415
South Korea	880
Germany	443
Canada	341
Taiwan	300
Singapore	278
United Kingdom	214

Top States of Residence

Georgia	67,932
Florida	9,948
California	9,704
Texas	7,336
North Carolina	5,215
Virginia	4,709
South Carolina	3,859
Tennessee	3,382
Alabama	3,033
New York	2,814

Top Employers

Lockheed Martin	1,049
IBM Corporation	1,031
Delta Air Lines, Inc.	985
The Southern Company	955
AT&T Inc.	897
General Electric Company	700
The Coca-Cola Company	474
Intel Corporation	444
Boeing Company	436
The Home Depot	430

Career Discovery & Development

Top Interviewing Companies, FY 2019

Microsoft	Capital One
Accenture	Siemens Corporation
Johnson and Johnson	Bloomberg
Micron Technology	IBM
Valero Energy Corp.	SunTrust Bank

Median Reported Starting Annual Salaries

by College, Academic Year 2018 - 2019

College	Bachelor's
Computing	\$99,000
Design	\$51,000
Engineering	\$71,500
Ivan Allen	\$46,000
Business	\$68,000
Sciences	\$63,000
Institute Average	\$66,500

Experiential Learning Programs, FY 2018 - 2019

Participants, FY 2018 -19

Undergraduate Cooperative Program	936
Professional Internship Program	1,324
Graduate Cooperative Program	1,035
Co-op Degrees Earned	317

International Education

Georgia Tech Students Abroad by Year 2016-2017 through 2018-2019*

Year	Number
2016-2017	2,215
2017-2018	2,377
2018-2019	2,442

* Year is equal to Fall term to Summer term of the following year.

International Programs

ACADEMIC INFORMATION

Georgia Tech strongly believes in the importance of international experience for students. Student interest in international programs has been growing steadily for two decades. Georgia Tech is committed to expanding opportunities for students to participate in academically and culturally valuable international programs.

Georgia Tech Students Abroad by Year 2007-08 through 2018-19*

Year	Number
2007-08	1,114
2008-09	1,189
2009-10	1,279
2010-11	1,391
2011-12	1,478
2012-13	1,577
2013-14	1,816
2014-15	1,967
2015-16	2,111
2016-17	2,215
2017-18	2,377
2018-19	2,442

*Year is equal to Fall Semester through Summer Semester of the following year.
Totals include Undergraduate and Graduate students.

Top Ten Locations for International Experience

Location	Number of Students
France	852
China	342
Germany	305
United Kingdom	239
Spain	232
Italy	212
Czech Republic	184
Ireland	134
New Zealand	80
Singapore	66

International Programs

ACADEMIC INFORMATION

College Comparison of Undergraduate Students Fall 2018 - Summer 2019

College	International Experience*
Design	75
Computing	291
Engineering	1,278
Ivan Allen	120
Business	163
Science	188
Total Undergraduate	2,115

*International Experience includes Study, Internships, or International Academic Project Abroad

Global Internship Program

Since 2014, the Global Internship Program (GIP) has been housed in the Office of International Education. GIP facilitates overseas internships for Georgia Tech students in a variety of settings, including corporate, academic, research, non-profit, governmental, and service. Note that global internship participation numbers are included in the overall international experience totals.

Global Internships

Year	Number of Global Interns
2013-14	138
2014-15	122
2015-16	150
2016-17	188
2017-18	179
2018-19	144

2018-19 Global Internship Participation by College

College	Number of Participants	Percentage of Participation
College of Design	2	1.3%
College of Computing	21	14.5%
College of Engineering	103	71.5%
College of Sciences	11	7.6%
Ivan Allen College	4	2.7%
Scheller College of Business	3	2%
Institute Total	144	100%

International Programs

ACADEMIC INFORMATION

Global Internships Participants by Level

Year	N	B.S.	%B.S.	M.S.	%M.S.	Ph.D.	%Ph.D.
2013-14	138	103	75%	17	12%	18	13%
2014-15	122	91	75%	15	12%	16	13%
2015-16	150	108	72%	21	14%	21	14%
2016-17	188	135	72%	29	15%	24	13%
2017-18	179	118	66%	28	16%	33	18%
2018-19	144	100	69.5%	26	18%	18	12.5%

Top Global Internship Employers in 2018-19

Company	Number of Global Interns
Siemens	10
TU Munich PREP Summer Research Program	7
BMW	5
NTT	5
Airbus	4
inodú	3
Tokyo Tech	3

Top Global Internship Locations in 2018-19

Global Interns went to 33 countries

Country	Number of Global Interns
Germany	37
Japan	11
France	9
New Zealand	5
United Kingdom	5

International Programs

ACADEMIC INFORMATION

International Plan

The International Plan is a challenging undergraduate academic program that develops a student's global competence within the context of his or her major. It is an optional, degree-long program that integrates overseas experiences, language proficiency, and globally-focused coursework into 27 participating majors (out of 36). It builds on existing undergraduate degree requirements and international opportunities. The IP is intended to be completed within the normal time frame of a four-year undergraduate degree. Completion of the International Plan is recognized by a designation on the student's diploma indicating a commitment to developing global competence as part of the degree, e.g., "B.S. in Electrical Engineering: International Plan."

College	Total IP Participants as of May 13, 2019	New First-Year Participants Joined IP in AY2018-19	Number of IP Graduates in AY2018-19	Total Number of IP Graduates Since Inception
Design	37	13	1	21
Computing	93	26	4	32
Engineering	394	111	23	170
Sciences	34	14	0	7
Ivan Allen	97	35	8	78
Scheller	45	7	2	26
Institute Total	700	206	38	334

International Student and Scholar Services

International Student and Scholar Services (ISSS), a unit of the Office of International Education, serves as a resource and advocate for the large and diverse population of international students and scholars. ISSS strives to create an environment where international students and scholars are able to make a well-integrated transition to Georgia Tech through diverse cultural, educational and leadership opportunities. In addition to serving enrolled students, ISSS also provides services to graduated students completing training in their field of study using Optional Practical Training (F-1 graduates) or Academic Training (J-1 students). OIE serves a vibrant community of Exchange Visitors who come to Tech to conduct research, teaching or related scholarly activities. Since 2013, the Exchange Visitors include student interns.

Year	F/J Student Visas	Post-Graduation Student Visas (OPT/AT)	J Student Interns	J Scholars	Institute Total
2013-14	4,301	885	97	781	6,064
2014-15	4,416	989	194	815	6,414
2015-16	4,703	1,188	212	976	7,079
2016-17	4,751	1,346	188	767	7,052
2017-18	4,818	1,498	211	834	7,361
2018-19	5,248	2,694	165	876	8,983

Housing

Housing Capacity & Occupancy, Fall 2019			
Student Housing	Capacity	Occupancy	% Occupied
Single	10,012	9,848	98.36%
Married	222	222	100.00%
Total Student	10,234	10,070	98.40%
Greek Housing	Capacity	Occupancy	% Occupied
Sorority	255	253	99.22%
Fraternity	1,196	1,051	87.88%
Total Greek	1,451	1,304	89.87%
Total All Housing	11,685	11,374	97.34%

Library

The Georgia Tech Library Collections & Usage, FY 2019	
Number of Titles	2,409,117
Items Circulated	25,163
SmartTech Holdings	56,799
SmartTech Unique Users	255,129
Electronic Books	1,969,579
Electronic Journals	267,794
Articles and Books Downloaded (estimated)	3,441,655
Classes taught by Library Faculty & Staff	284
Library Attendance	NA*

*No Attendance Data Due to Construction

Space

Square Footage by Functional Area, Fall 2019	
Area	Gross Sq. Ft.
Academic Instruction and Research	5,667,789
Academic Support	794,070
Athletic Association	919,684
Campus Support	902,367
GT Research Institute	1,796,686
Parking Decks	2,474,146
Residential	3,326,503
Student Support	733,726
Other	185,041
Institute Total*	16,800,012

* Georgia Tech has 258 buildings

Tuition and Fees, FY 2020

	Resident	Non-Resident
Undergraduate	\$12,682	\$33,794
Graduate	\$16,088	\$31,164
MBA Program	\$31,532	\$42,776

Breakdown of Mandatory Fees for Undergraduate Georgia Residents, FY 2020

Recreation-Facility	\$108
Student Activities	\$246
Student Athletic	\$254
Student Health	\$344
Transportation	\$170
Technology	\$214
USG Special Institutional Fee	\$1,088
Total	\$2,424

Estimated Charges for Undergraduate Georgia Residents, FY 2020

Tuition & Fees	\$12,682
Dormitory Room Rent	\$6,918
Board	\$5,172
Miscellaneous (books, supplies, personal, etc.)	\$4,000
Average Loan Costs	\$60
Total Resident Freshman Cost	\$28,832

Georgia Tech Awarded Student Aid, FY 2018 - 2019

Source	Number of Awards	Amount of Awards
Federal Funds	14,550	\$95,133,258
State Funds	12,669	\$75,376,051
Institutional Scholarships/Loans	9,760	\$52,637,154
Total GT Awarded Aid	36,979	\$223,146,463
Total Outside Awards	3,203	\$18,265,015
Total Awards	40,182	\$241,411,478

Revenues - FY 2019 Actual

State Appropriations	\$	318,443,910
Student Tuition and Fees	\$	382,718,891
Gifts, Grants and Contracts	\$	1,003,707,127
Sales, Services & Other	\$	242,629,949
Total Revenue	\$	1,947,499,877

Expenditures by Major Program Areas FY 2019 Actual

Instruction	\$	339,381,873
Research	\$	837,472,283
Public Service	\$	75,979,744
Academic Support	\$	66,316,435
Student Services	\$	49,774,929
Institutional Support	\$	97,825,693
Operation of Plant	\$	197,401,283
Scholarships and Fellowships	\$	19,032,957
Auxiliary Enterprises	\$	90,604,997
Non-Operating Expenses	\$	27,674,959
Total Expenditures	\$	1,801,465,153

Note: Financial information for the Institute's affiliated organizations has not been included in the presentation above. The Institute relies upon its affiliates for support of sponsored programs, scholarship funding, capital investments and various Institute programs.

Research Proposals and Awards for FY 2019

College	Proposals		Awards	
	Number	Amount	Number	Amount
College of Design	172	\$ 8,898,595	739	\$ 10,263,546
College of Computing	204	\$ 90,726,009	184	\$ 34,092,832
College of Engineering	1,707	\$ 714,236,835	1,334	\$ 235,263,896
Ivan Allen College	66	\$ 14,002,829	43	\$ 9,465,997
Scheller College of Business	9	\$ 772,780	6	\$ 593,589
College of Sciences	500	\$ 257,208,602	394	\$ 70,844,624
Research Centers	262	\$ 55,729,147	249	\$ 46,137,678
GT Research Institute	522	\$ 1,743,534,442	856	\$ 643,433,029
Institute Total	3,442	\$ 2,885,109,239	3,805	\$ 1,050,095,192

Research Awards by Agency for FY 2019

Awarding Agency	Amount	% Total
U. S. Air Force	\$ 239,861,049	22.8%
U. S. Army	\$ 152,488,647	14.5%
U. S. Navy	\$ 78,549,757	7.5%
U. S. Department of Commerce	\$ 8,081,001	0.8%
U. S. Department of Defense	\$ 130,500,374	12.4%
U. S. Department of Energy	\$ 24,496,225	2.3%
U. S. Department of HHS	\$ 46,163,519	4.4%
NASA	\$ 14,692,251	1.4%
National Science Foundation	\$ 84,002,487	8.0%
Other Federal Agencies	\$ 24,840,085	2.4%
Total Federal	\$ 803,675,395	76.5%
Colleges & Universities	\$ 51,940,367	4.9%
Government Owned-Contractor Operated Facilities	\$ 10,843,216	1.0%
Industrial	\$ 117,736,832	11.2%
Miscellaneous	\$ 35,172,458	3.3%
State and Local Governments	\$ 30,726,924	2.9%
Grand Total	\$ 1,050,095,192	100.0%

Office of Sponsored Programs - Research Scope

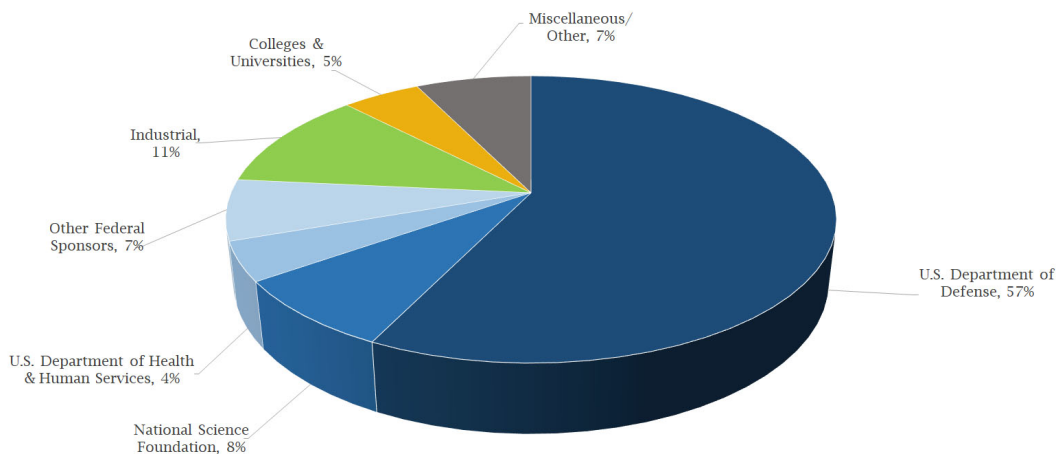
Awards Summary Detail, Fiscal Year 2019

Unit	Proposals		Awards	
	Number	Amount	Number	Amount
College of Engineering				
Aerospace	228	\$52,322,332	198	\$26,832,396
Biomedical Engineering (BME)	215	152,514,544	156	32,956,244
Civil	188	53,829,833	127	21,051,961
Chemical & Biomolecular Engineering	135	61,853,918	125	23,967,446
Electrical & Computer Engineering (ECE)	314	127,911,229	253	55,141,463
ECE - NEETRAC	103	5,812,576	93	5,864,203
Dean, College of Engineering	1	94,999	1	94,999
Industrial & Systems	83	33,830,417	62	13,025,087
Mechanical	349	197,366,089	259	45,817,047
Materials Science	91	28,700,898	60	10,513,051
Total	1,707	\$714,236,835	1,334	\$235,263,896
College of Design				
AMAC	100	\$343,500	685	\$3,847,864
Dean, College of Design	3	66,402	-	0
Building Construction	6	1,027,204	5	435,732
CATEA	5	806,386	7	2,084,942
City and Regional Planning	4	1,067,968	4	45,000
College of Design	4	508,132	-	-
CQGRD	7	972,430	4	111,000
Dean of Architecture	1	5,000	1	5,000
Digital Building Lab	13	275,000	10	141,509
Geographic Information Systems	3	121,500	6	205,875
Industrial Design	13	1,136,718	5	913,565
Music Technology	1	25,000	5	149,974
School of Architecture	7	1,724,910	7	2,323,085
School of Music	5	818,445	-	-
Total	172	\$8,898,595	739	\$10,263,546
College of Computing				
C21U	-	\$0	2	\$112,223
Computing	6	\$627,439	7	\$437,643
Dean - College of Computing	-	\$0	-	\$0
Computational Science & Engineering	31	10,861,305	28	6,375,436
Computer Science	75	43,892,459	61	13,339,445
Interactive Computing	88	33,144,806	83	12,327,639
IRIM	1	50,000	2	1,450,446
ML@GT	3	2,150,000	1	50,000
Total	204	\$90,726,009	184	\$34,092,832
Ivan Allen College	66	\$14,002,829	43	\$9,465,997
Scheller College of Business	9	\$772,780	6	\$593,589

*Table continues on Page 58

Unit	Proposals		Awards	
	Number	Amount	Number	Amount
College of Sciences				
Applied Physiology	-	\$0	1	\$25,547
Biology	140	108,525,000	105	22,000,673
CEISMC	24	4,728,894	12	1,278,854
Chemistry	123	67,231,829	97	19,923,002
College of Sciences	2	999,856	3	455,982
CRNCH	2	1,012,000	1	12,000
Earth & Atmospheric Sciences	78	17,804,373	56	10,773,978
Mathematics	39	16,152,101	41	4,410,718
Physics	58	19,446,087	56	9,479,219
Psychology	34	21,308,462	22	2,484,651
Total	500	\$257,208,602	394	\$70,844,624
Research Centers				
	262	\$55,729,147	249	\$46,137,678
Georgia Tech Research Institute				
ACL - Advanced Concepts Laboratory	61	\$100,335,720	88	\$36,724,495
ASL - Applied Systems Laboratory	17	91,511,862	26	13,279,206
ATAS - Aerospace, Transportation & Advanced Systems	78	113,987,355	98	76,116,426
CIPHER - Cybersecurity, Infr Protection & Hrdwr Eval Rsrcl	67	310,741,497	153	138,159,173
CS - Chief Scientist	-	-	2	400,000
DDO - Deputy Director's Office	-	-	1	7,200
ESLYS - Electronic Systems Laboratory	49	681,335,763	142	182,103,801
EOSD - Electronic, Optics and Systems Directorate	1	-	-	-
EOSL - Electro-Optical Systems Laboratory	62	54,798,104	89	38,460,343
ICL - Information & Communications Laboratory	82	84,997,439	70	57,355,865
ICSD - Information & Cyber Sciences Directorate	11	99,498,162	17	7,320,325
ISD - Information Systems Department	-	-	-	-
SEAL - Sensors and Electromagnetic Applications Lab	92	206,208,540	168	90,909,195
SISD - Sensors and Intelligent System Directorate	1	120,000	-	-
SSD - Support Services				
GTRI- Research Property	1	-	2	2,597,000
Total	522	\$1,743,534,442	856	\$643,433,029
Institute Total				
	3,442	\$2,885,109,239	3,805	\$1,050,095,192

Source: Office of Sponsored Programs



The Enterprise Innovation Institute (EI²)



Enterprise Innovation Institute (EI²) is Georgia Tech's business outreach organization and serves as the primary vehicle to achieve Georgia Tech's goal of expanded local, regional, and global outreach.

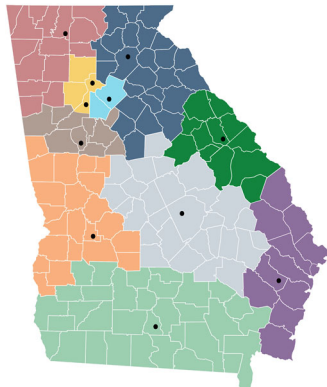
EI² is the nation's largest and most comprehensive university-based program of business and industry assistance, technology commercialization, and economic development. When compared to counterparts at other universities, EI² is unique because we bring all of these areas of expertise into a single organization and are able to connect our clients to more than one program or service to meet your individual needs.

Reporting through the executive vice-president for research at Georgia Tech, EI² serves startups, industry, the public sector, and students to help increase your bottom line, improve competitiveness, and positively impact the economy. In addition, EI² provides connections to Georgia Tech's vast resources, including world-class research, state-of-the-art facilities, internationally recognized experts, and upper-echelon students.

EI²'s key programs include the Georgia Manufacturing Extension Partnership (GaMEP), the Advanced Technology Development Center (ATDC), VentureLab, and the Economic Development Lab. See innovate.gatech.edu for a complete listing of programs and services.

Select EI² impact results in fiscal year 2019:

- 24 startups formed from Georgia Tech research
- \$350M+ investments into GT-research startups
- 790 active company startups in ATDC incubator
- \$456 million in capital activity for ATDC companies
- \$318 million in new sales, \$122 million in cost savings and \$160 million of new investments for assisted manufacturers
- 9,600+ industry and businesses served across the state
- 30+ economic development research projects in six countries



EI² manages a network of 11 Georgia Tech Regional Offices around the state to facilitate delivery of economic development services and to provide a local connection to Georgia Tech. To learn more about EI² or to take advantage of these outreach opportunities please visit: innovate.gatech.edu.

Faculty by Gender as of Fall 2019

College	Department	Male	Female	Other/Not Specified	Institute Total
College of Computing	Computational Science & Eng	9	3		12
	Computing, College of	10	4		14
	School of Computer Science	27	5		32
	School of Interactive Computng	18	10		28
	College of Computing Total	64	22		86
College of Design	College of Design		1		1
	School of Architecture	28	10		38
	School of Building Constructio	9	3		12
	School of City & Regional Plan	13	7		20
	School of Industrial Design	21	9		30
	School of Music	9	4		13
	College of Design Total	80	34		114
College of Engineering	Aerospace Engineering	38	3		41
	Biomedical Engr, GT/Emory	33	10		43
	Chemical and Biomolecular Engr	28	10		38
	Civil & Environmental Engr	42	12		54
	Electrical & Computer Engr	91	11		102
	Industrial & Systems Engr	49	13		62
	Materials Science & Engr	26	7		33
	Mechanical Engineering	89	13		102
	Renewable Bioproducts Inst-RBI	1			1
	College of Engineering Total	397	79		476
College of Sciences	Biological Sciences	38	14		52
	Chemistry & Biochemistry	28	6		34
	Earth & Atmospheric Sciences	16	10		26
	Mathematics	50	17	1	68
	Physics	33	8		41
	Psychology	20	5		25
	College of Sciences Total	185	60	1	246
Ivan Allen College	Economics	13	6		19
	IAC-History & Sociology	12	9		21
	International Affairs	19	12		31
	Literature,Media & Com	32	38		70
	Modern Languages	19	32		51
	Public Policy	25	11		36
	Total	120	108		228
Scheller College of Business	Inst Leadership & Entreprene	2	4		6
	Scheller College of Business	77	28		105
	Scheller College of Business Total	79	32		111
Other Academic Areas	CEISMC		1		1
	Center for Academic Success		1		1
	Ctr for 21st Century Univer	1			1
	Ctr for Adv Communicat Policy		1		1
	Digital Building Lab	1			1
	EI2-Enterprise Innovation Inst	1			1
	GTPE - Academic Services	4			4
	GTPE--Language Institute	5	17		22
	GTPE-PE Programs	2			2
	GTRI-Adv Concepts	1			1
	GTRI-CIPHER		1		1
	GTRI-SISD	1			1
	Provost & Executive VP for AA	1			1
	Vice Provost/Grad Ed & Fac Dev		1		1
	VP for International Initiativ	1			1
Other Academic Areas Total	18	22		40	
Institute Total	943	357	1	1,301	



Faculty by Race/Ethnicity as of Fall 2019

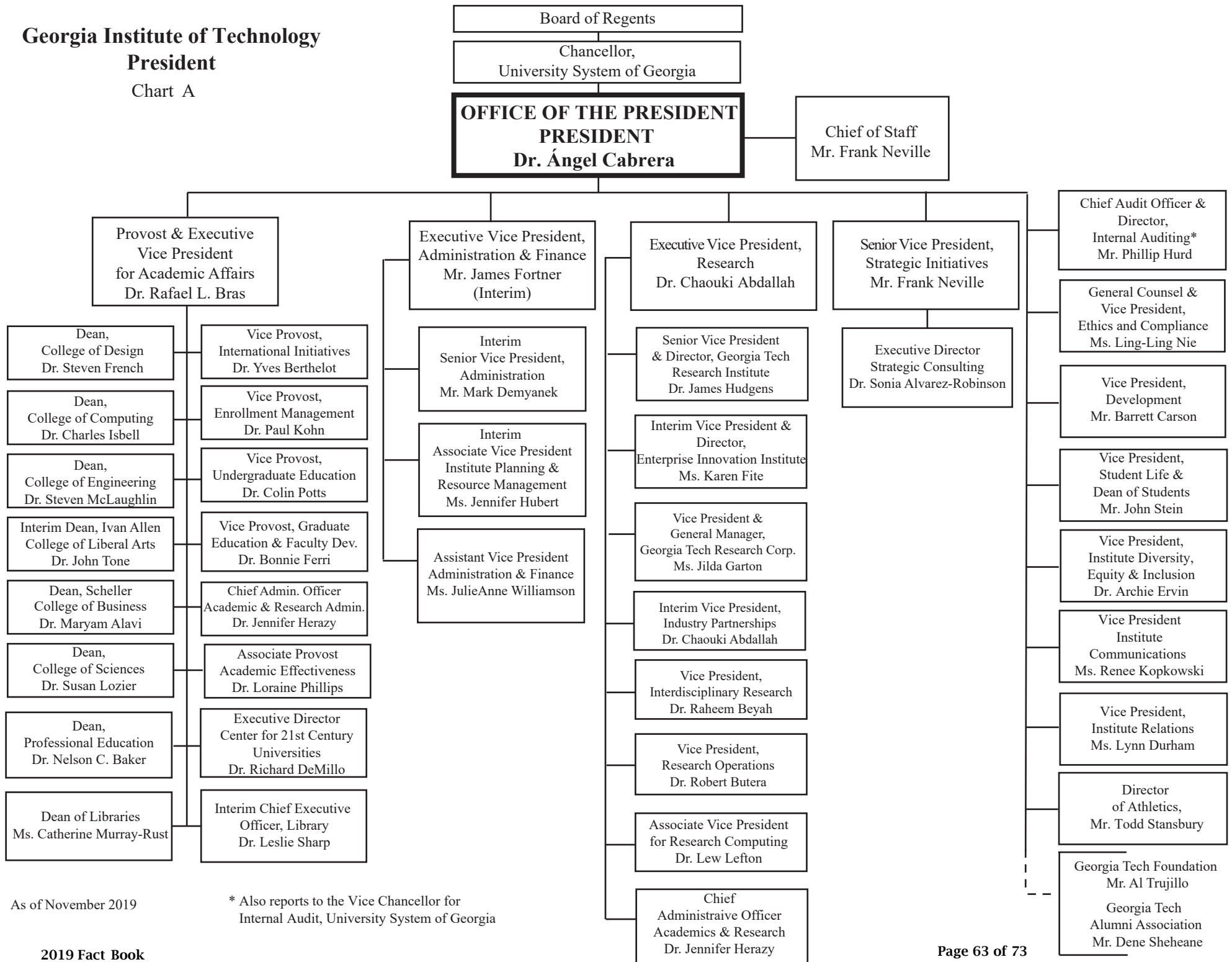
College	Department	Asian			Black/African American		Hispanic		Multi-Racial	White		Other/Not Specified	Unknown		Institute Total
		Male	Female	Other/Not Specified	Male	Female	Male	Female	Male	Male	Female		Male	Female	
College of Computing	Computational Science & Eng	7	2							2	1				12
	Computing, College of	1			3				1	5	4				14
	School of Computer Science	14	2				1			12	3				32
	School of Interactive Computng	3	3					1		15	6				28
	College of Computing Total	25	7		3		1	1	1	34	14				86
College of Design	College of Design										1				1
	School of Architecture	2	1			1	1	1		25	7				38
	School of Building Constructio		2				1			8	1				12
	School of City & Regional Plan	1			1		1	1		10	5			1	20
	School of Industrial Design	3	3			1				18	5				30
	School of Music		1			1				9	2				13
	College of Design Total	6	7		1	3	3	2		70	21			1	114
College of Engineering	Aerospace Engineering	9					2			27	3				41
	Biomedical Engr, GT/Emory	11	1		2		2			18	9				43
	Chemical and Biomolecular Engr	6	5		1		2			19	5				38
	Civil & Environmental Engr	10	3				2			30	9				54
	Electrical & Computer Engr	23	3				4			64	8				102
	Industrial & Systems Engr	18	4		3		2			25	9	1			62
	Materials Science & Engr	12	2				1	2		13	3				33
	Mechanical Engineering	33	4		3	1	1		1	51	8				102
	Renewable Bioproducts Inst-RBI									1					1
	College of Engineering Total	122	22		9	1	16	2	1	248	54	1			476
	College of Sciences	Biological Sciences	7	5		1		1			29	9			
Chemistry & Biochemistry		4	1		2		3			19	4		1		34
Earth & Atmospheric Sciences		5	1				1			10	9				26
Mathematics		13	9	1			5			32	8				68
Physics		3	2				1		2	26	6		1		41
Psychology								1		19	4	1			25
College of Sciences Total		32	18	1	3		11	1	2	135	40	2	1		246
Ivan Allen College	Economics	2	3		1					9	3	1			19
	IAC-History & Sociology	1			1	1		1		10	7				21
	International Affairs	2	2		1					16	10				31
	Literature,Media & Com	4	2		1	4				27	32				70
	Modern Languages	5	9		1		5	2		7	21	1			51
	Public Policy		1			2	2			23	8				36
	Ivan Allen College Total	14	17		5	7	7	3		92	81	2			228
	Scheller College of Business				3	1			1	46	21	1			105
Scheller College of Business Total	26	6		3	1			1	48	25	1			111	
Other Academic Areas	CEISMC										1				1
	Center for Academic Success										1				1
	Ctr for 21st Century Univer									1					1
	Ctr for Adv Communicat Policy					1									1
	Digital Building Lab									1					1
	EI2-Enterprise Innovation Inst									1					1
	GTPE - Academic Services									4					4
	GTPE-Language Institute		2			1		1		4	12	1	1		22
	GTPE-PE Programs									2					2
	GTRI-Adv Concepts									1					1
	GTRI-CIPHER										1				1
	GTRI-SISD									1					1
	Provost & Executive VP for AA									1					1
	Vice Provost/Grad Ed & Fac Dev										1				1
	VP for International Initiativ									1					1
	Other Academic Areas Total		2			2		1		17	16	1	1		40
Institute Total		225	79	1	24	14	38	10	5	644	251	7	2	1	1,301

Tenured/Tenure-Track Faculty as of Fall 2019

College	Department	Regents Professor		Professor		Associate Professor		Assistant Professor		Institute Total	
		Male	Female	Male	Female	Male	Female	Male	Female		
College of Computing	Computational Science & Eng	1	1	1		4	1	2	1	11	
	School of Computer Science			14	3	3	2	10		32	
	School of Interactive Computng	2	1	7	2	4	2	4	4	26	
	College of Computing Total	3	2	22	5	11	5	16	5	69	
College of Design	College of Design				1					1	
	School of Architecture			6	1	9	1	2	1	20	
	School of Building Constructio					2			3	5	
	School of City & Regional Plan			1		3	1	1	2	8	
	School of Industrial Design			4			1	2	3	10	
	School of Music			2		2			3	7	
	College of Design Total			13	2	16	3	5	12	51	
College of Engineering	Aerospace Engineering	4		15	1	8	1	5		34	
	Biomedical Engr, GT/Emory	2		10	2	3	3	8	3	31	
	Chemical and Biomolecular Engr	2		10	3	9	3	4	4	35	
	Civil & Environmental Engr			19	4	8	4	5	3	43	
	Electrical & Computer Engr	2		58	4	15	4	8	1	92	
	Industrial & Systems Engr			24	7	10	2	5	2	50	
	Materials Science & Engr	2		15	2	3	3	3		28	
	Mechanical Engineering	6		37	2	20	6	14	4	89	
	College of Engineering Total	18		188	25	76	26	52	17	402	
College of Sciences	Biological Sciences	1		18	4	13	2	3	4	45	
	Chemistry & Biochemistry	4		10	2	6	2	5	2	31	
	Earth & Atmospheric Sciences			9	4	3	3	3		22	
	Mathematics	3		23	3	7	3	3	4	46	
	Physics	2		12	2	11	2	6	2	37	
	Psychology			8	2	5	1	5	1	22	
College of Sciences Total	10		80	17	45	13	25	13	203		
Ivan Allen College	Economics			3	1	4	3	4	1	16	
	IAC-History & Sociology	1		4	2	3	4	3	1	18	
	International Affairs	1		4	2	3	2	3	4	19	
	Literature,Media & Com			7	5	6	6	3	2	29	
	Modern Languages				1	9	6		3	19	
	Public Policy		1	3	3	11	2	2	1	23	
	Ivan Allen College Total	2	1	21	14	36	23	15	12	124	
Scheller College of Business	Inst Leadership & Entreprene				1					1	
	Scheller College of Business	1	1	17	2	18	4	13	11	67	
	Scheller College of Business Total	1	1	17	3	18	4	13	11	68	
Other Academic Areas	CEISMC				1					1	
	Digital Building Lab					1				1	
	Other Academic Areas Total				1	1				2	
Institute Total			34	4	341	67	203	74	126	70	919

Georgia Institute of Technology
President

Chart A

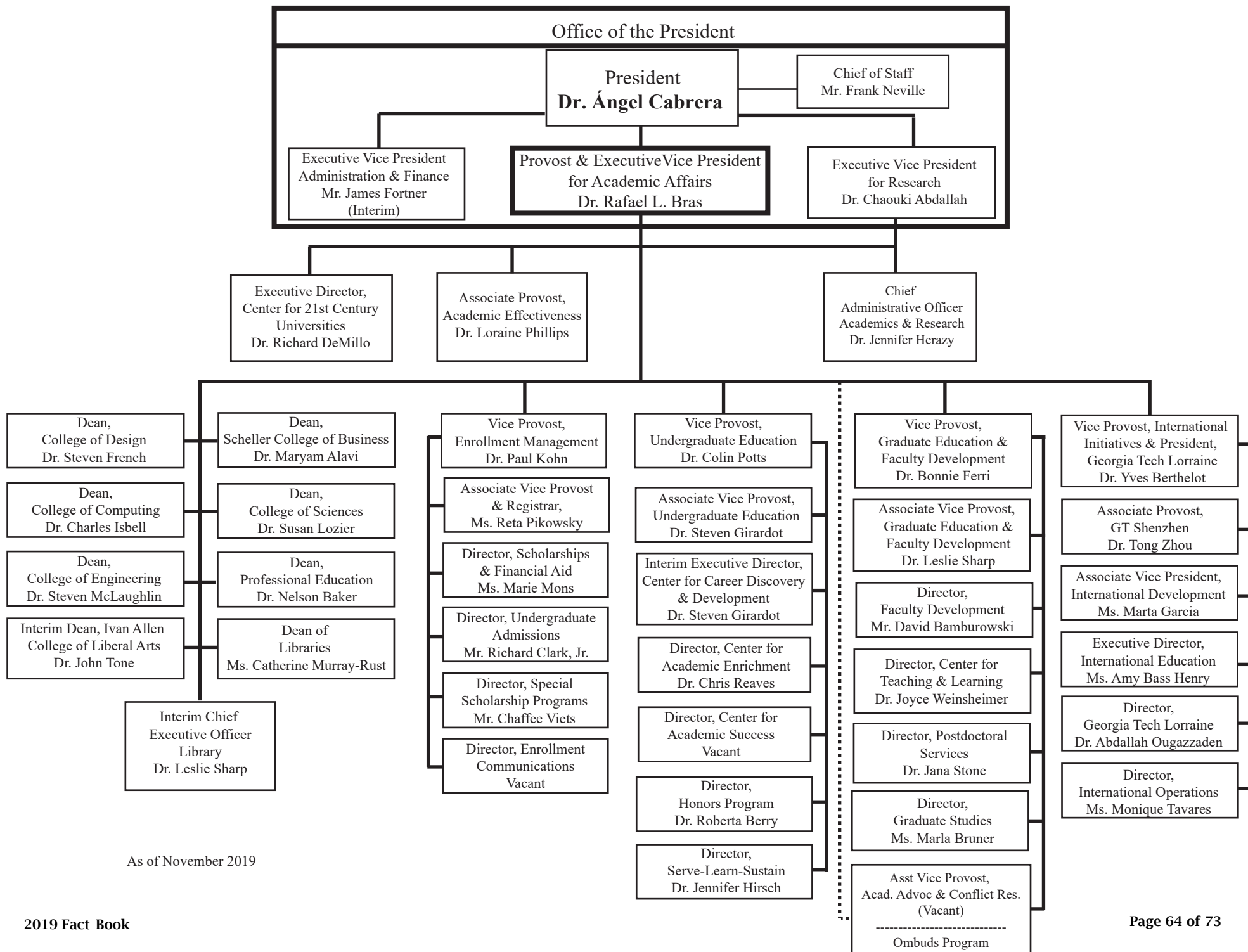


As of November 2019

* Also reports to the Vice Chancellor for Internal Audit, University System of Georgia

Georgia Institute of Technology

Provost and Executive Vice President for Academic Affairs

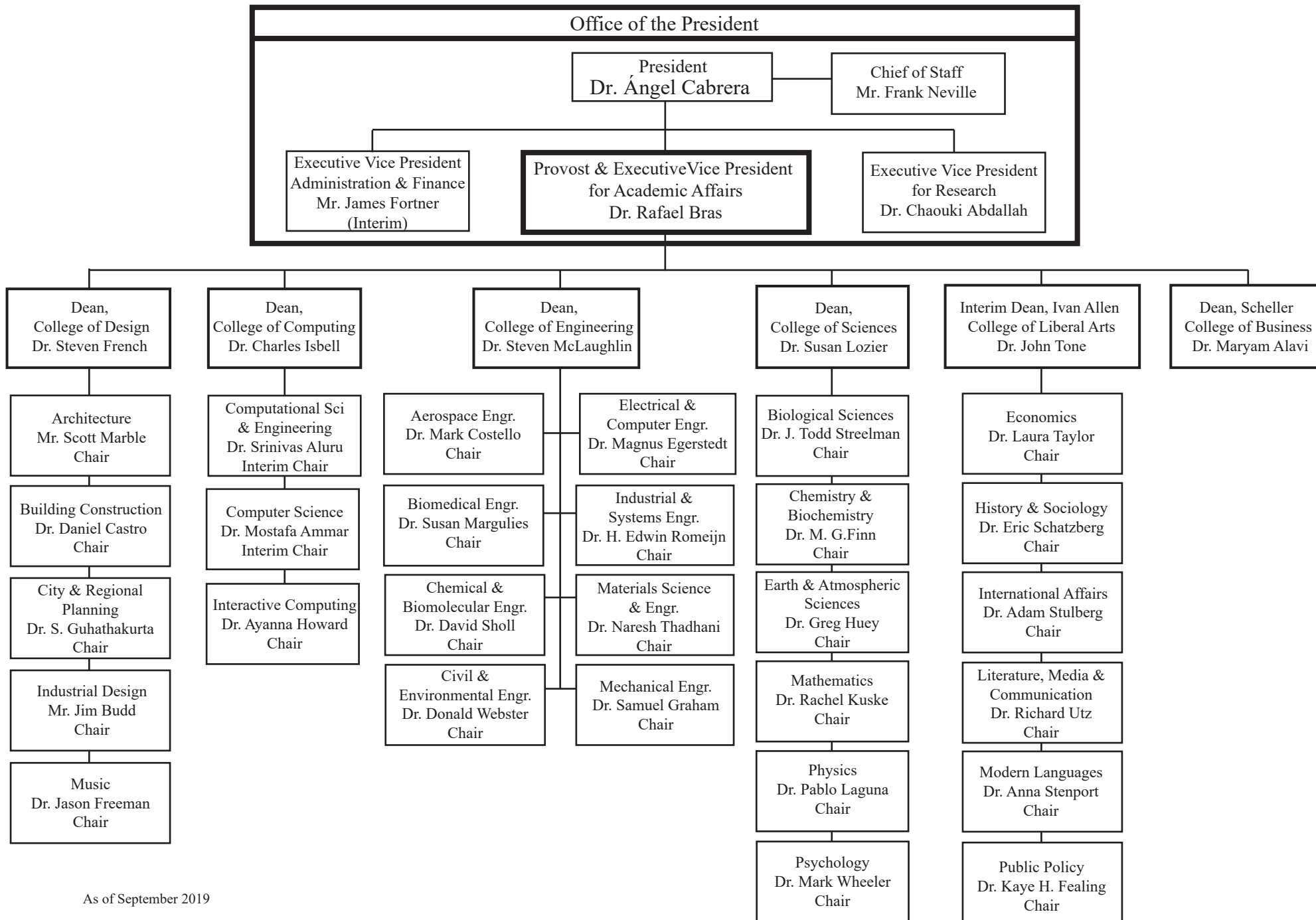


As of November 2019

Georgia Institute of Technology

Provost and Executive Vice President for Academic Affairs

Degree Granting Schools and Departments

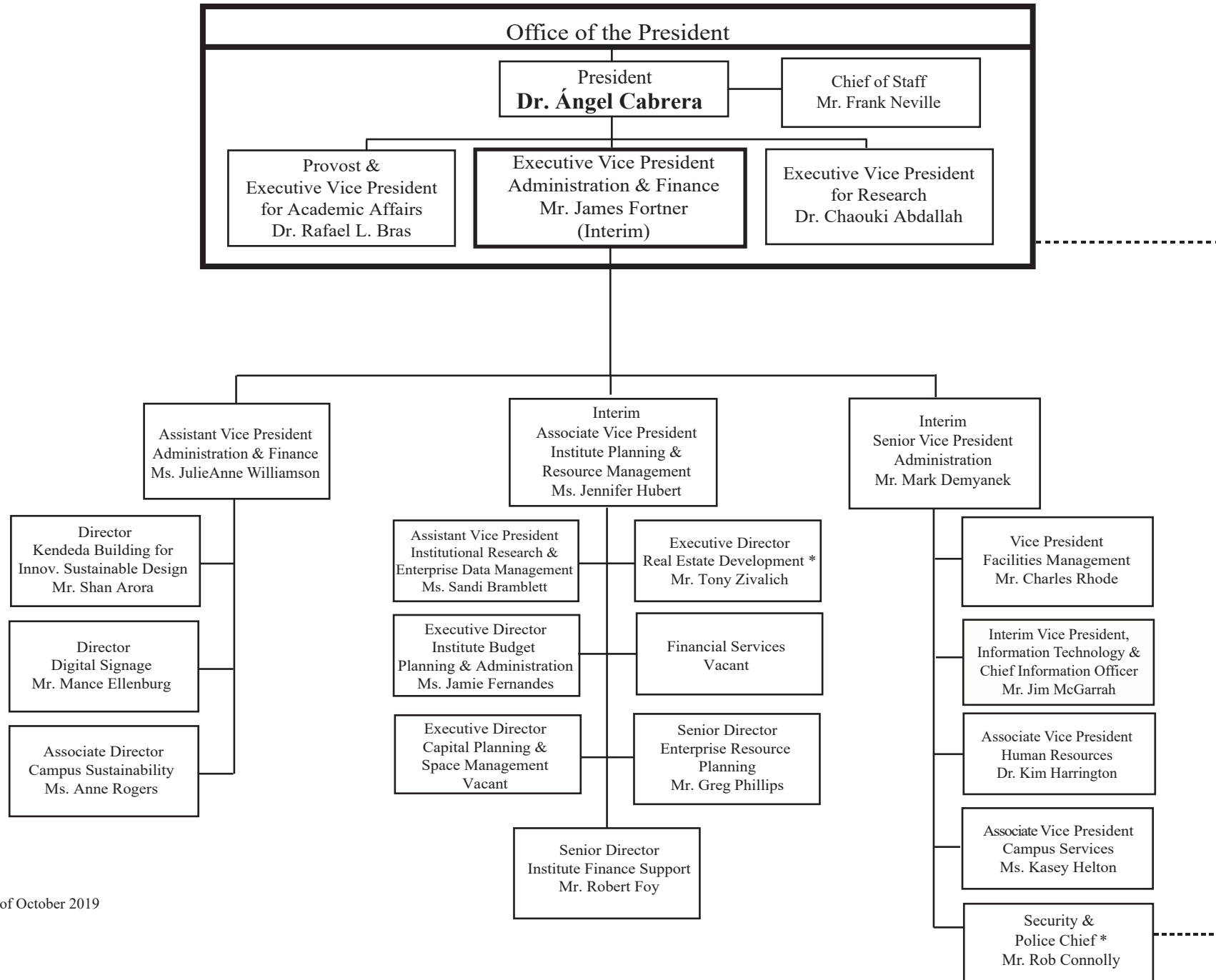


As of September 2019

Georgia Institute of Technology

Executive Vice President for Administration and Finance

Chart D

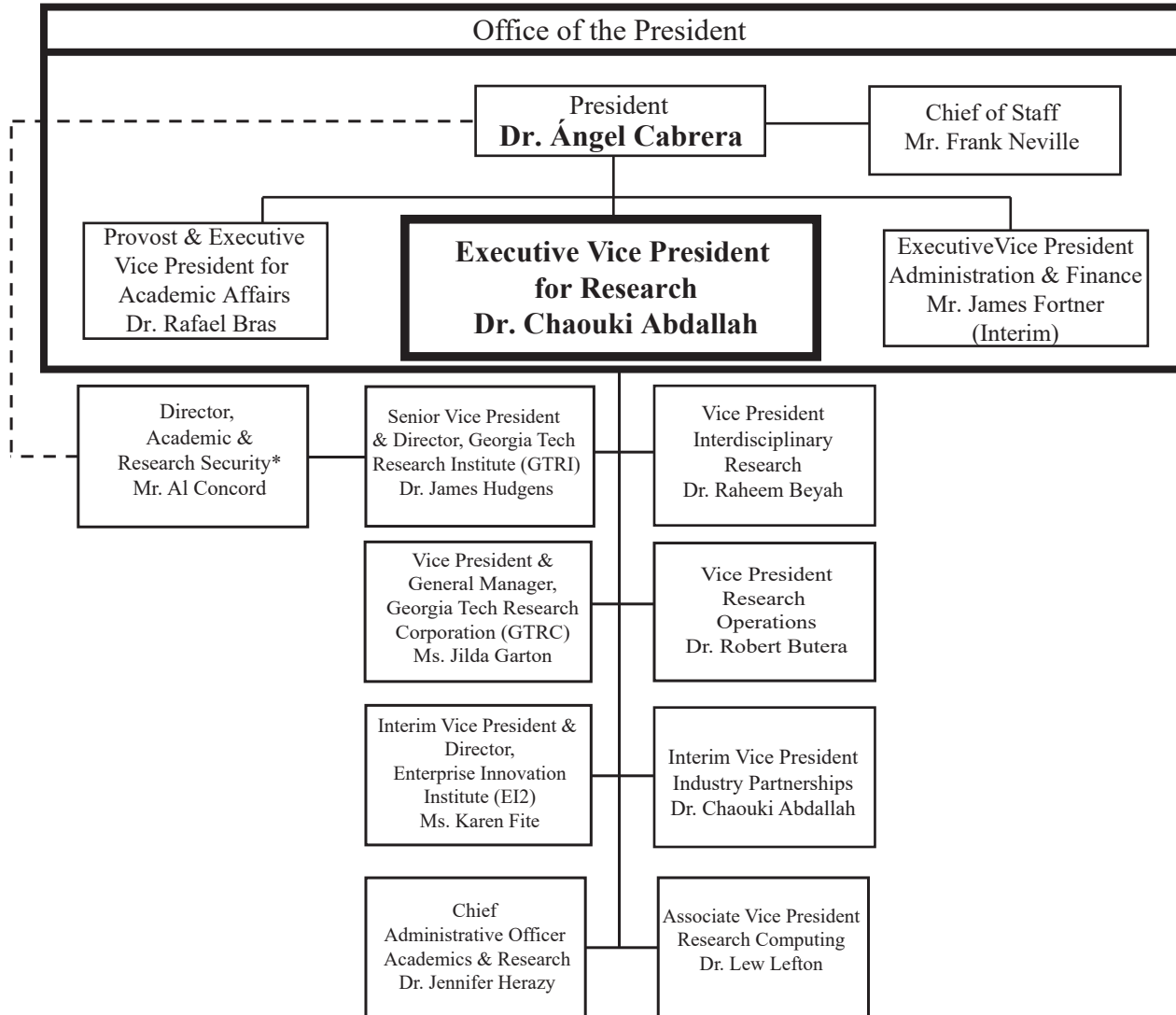


As of October 2019

* Reporting relationship includes direct access to EVP as required and for the purpose of institutional accountability.

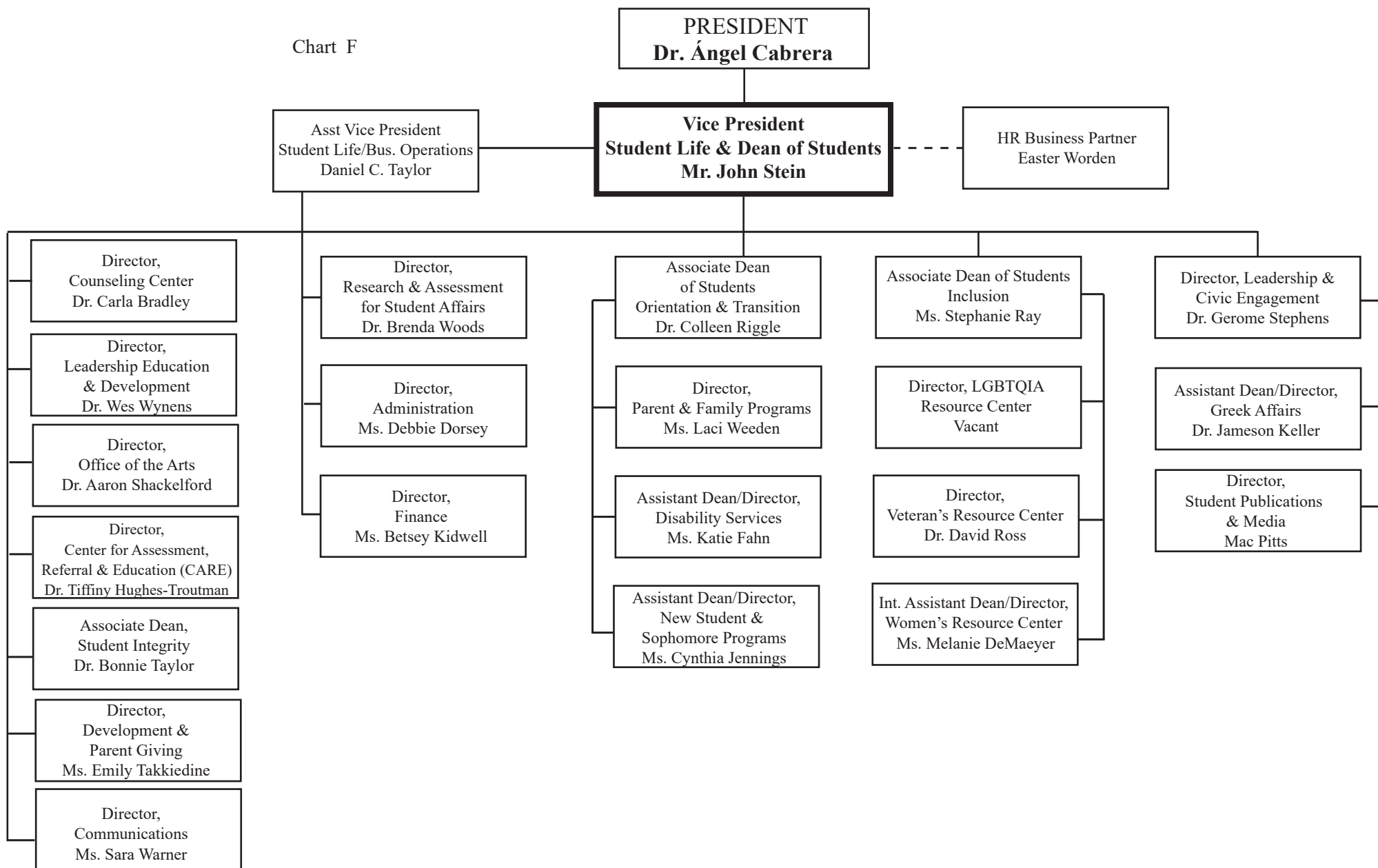
Chart E

Georgia Institute of Technology Executive Vice President for Research



Georgia Institute of Technology Student Life

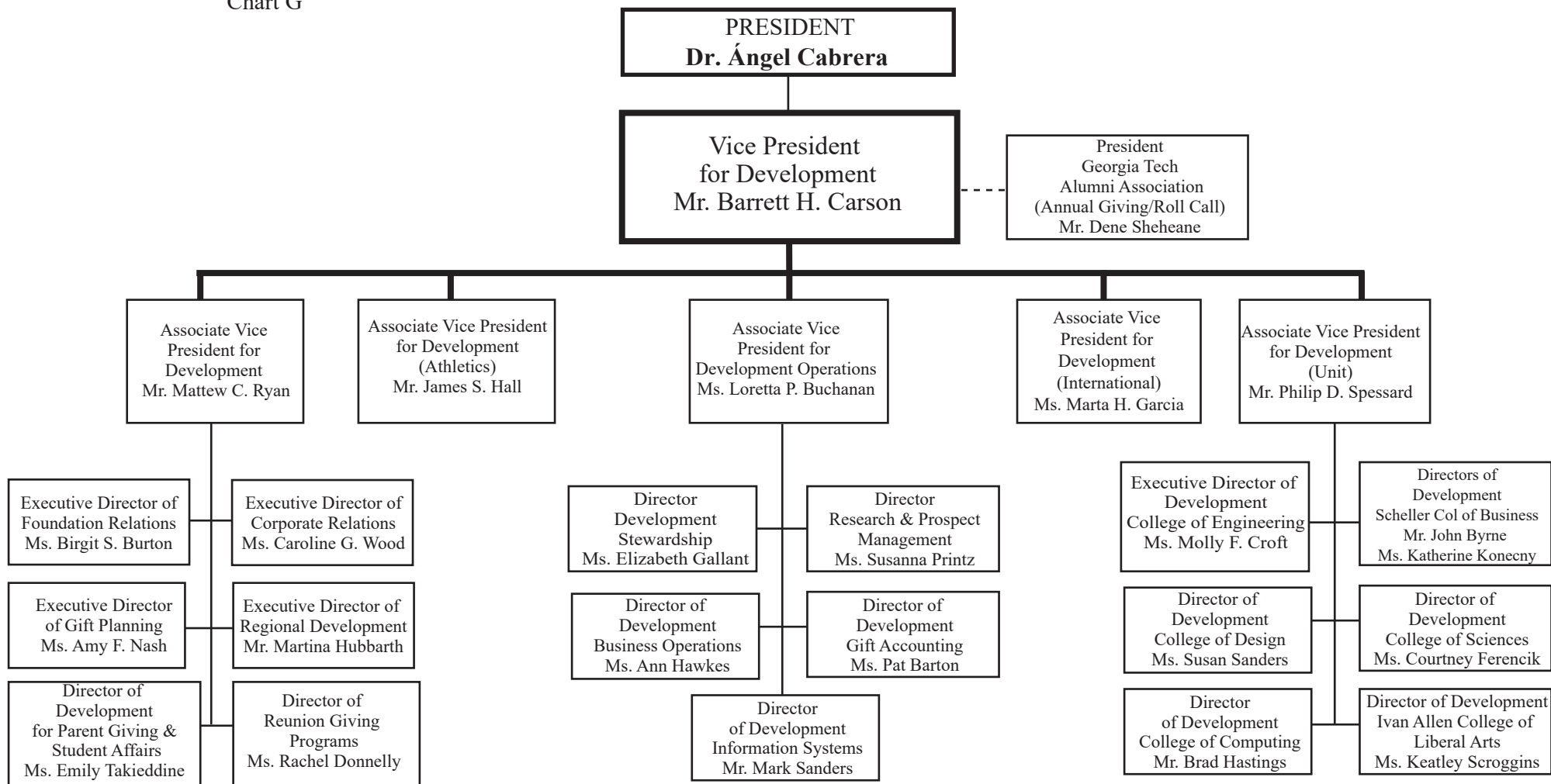
Chart F



As of September 2019

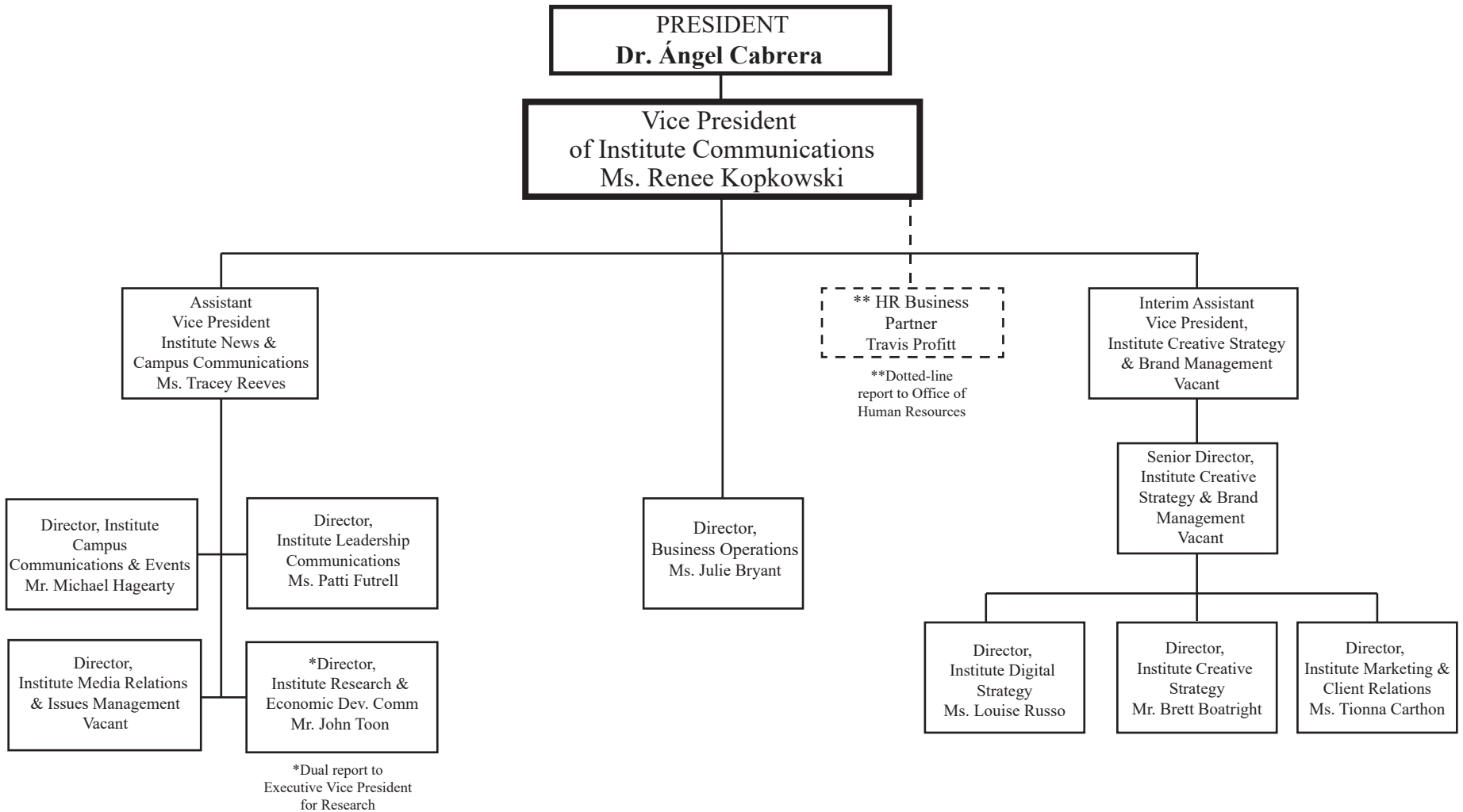
Georgia Institute of Technology Development

Chart G



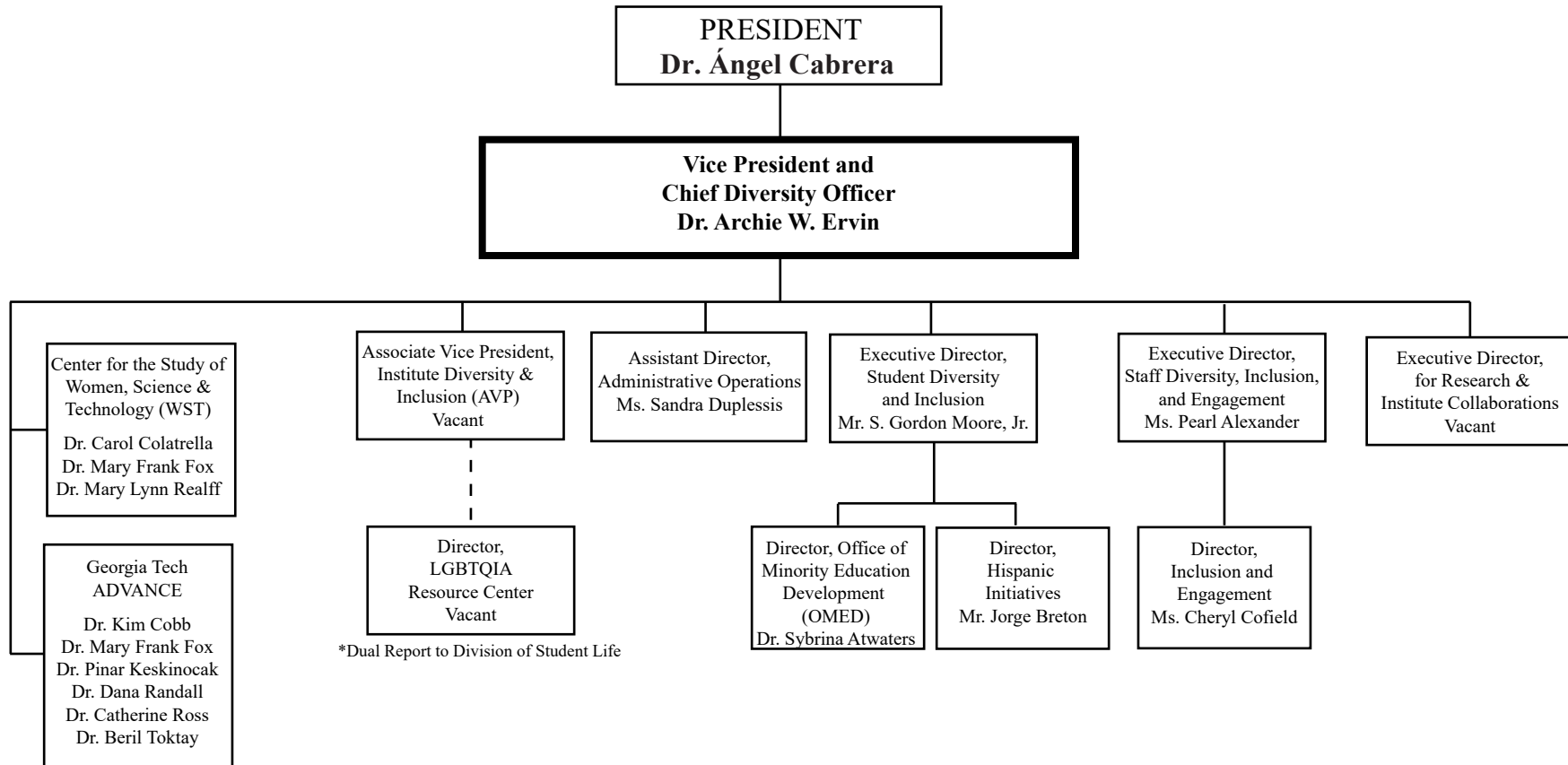
**Georgia Institute of Technology
Institute Communications**

Chart H



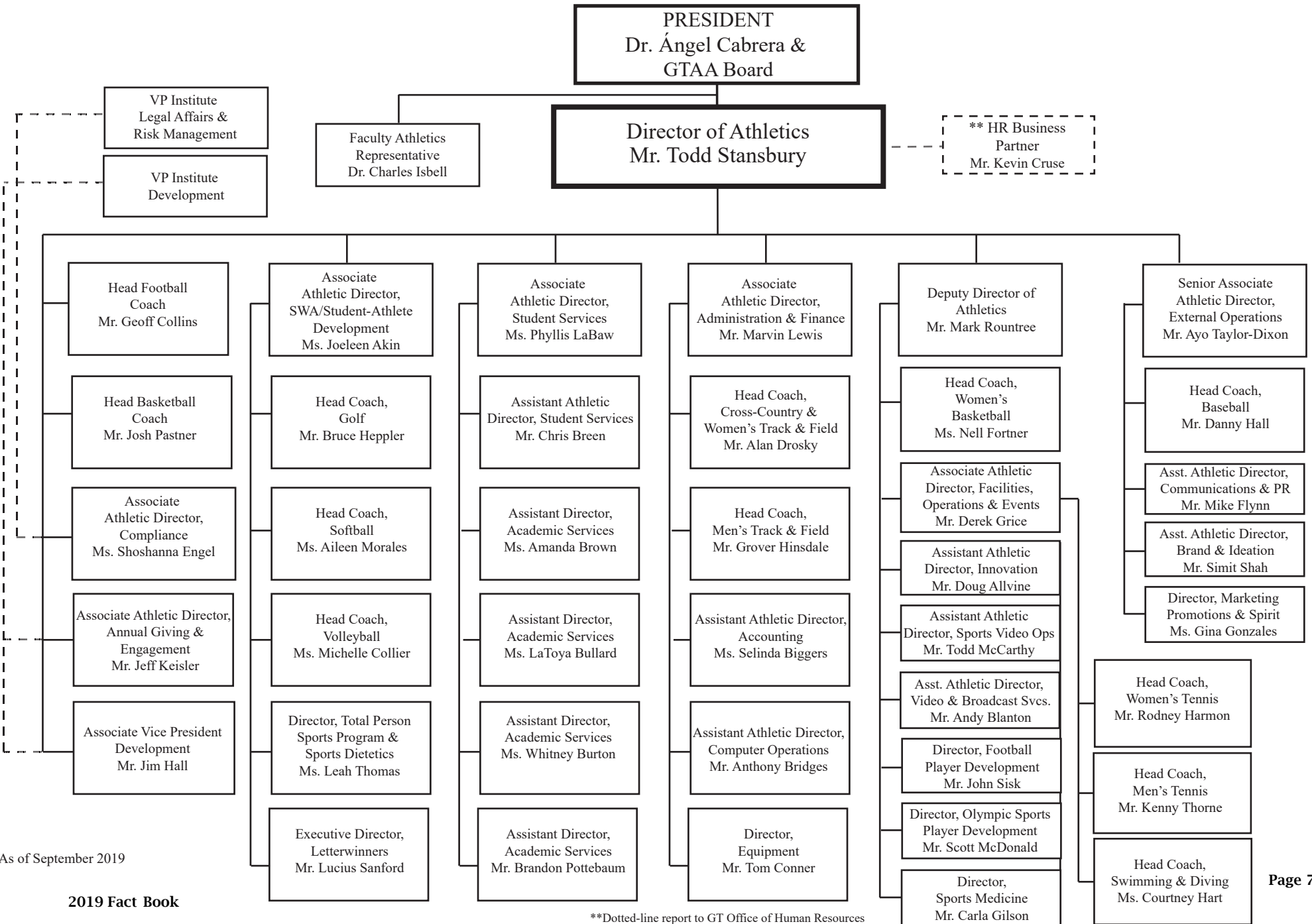
Georgia Institute of Technology Institute Diversity, Equity & Inclusion

Chart I



Georgia Institute of Technology Georgia Tech Athletic Association

Chart J



As of September 2019

**Dotted-line report to GT Office of Human Resources

CREATING THE NEXT®



Office of Institutional Research and Planning
Georgia Institute of Technology
Atlanta, Georgia 30332-0530
(404) 894-3311
www.irp.gatech.edu



Recyclable

This publication is printed on paper that is produced with recycled material. Georgia Tech is committed to environmental sustainability. Please recycle this publication.

Copyright 2019 • Georgia Institute of Technology